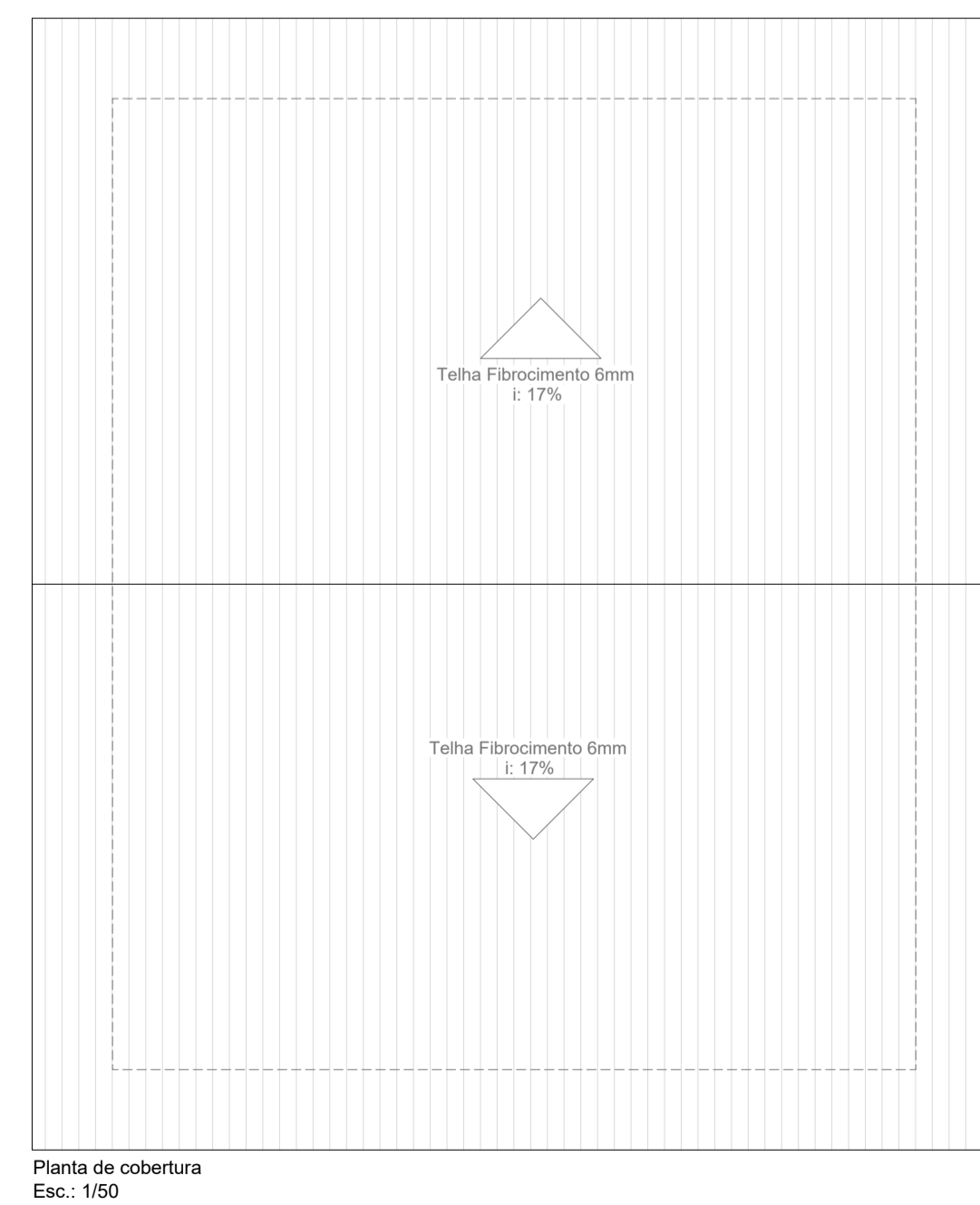
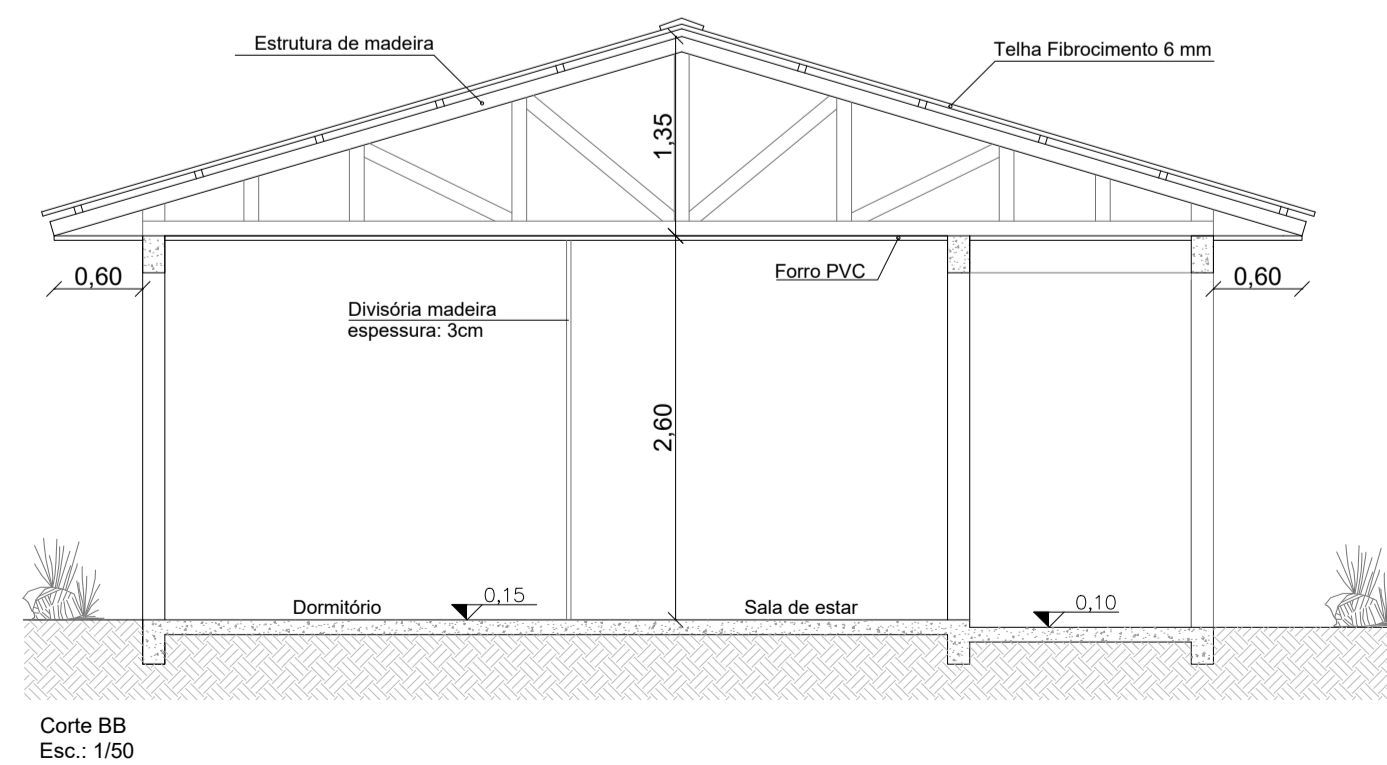
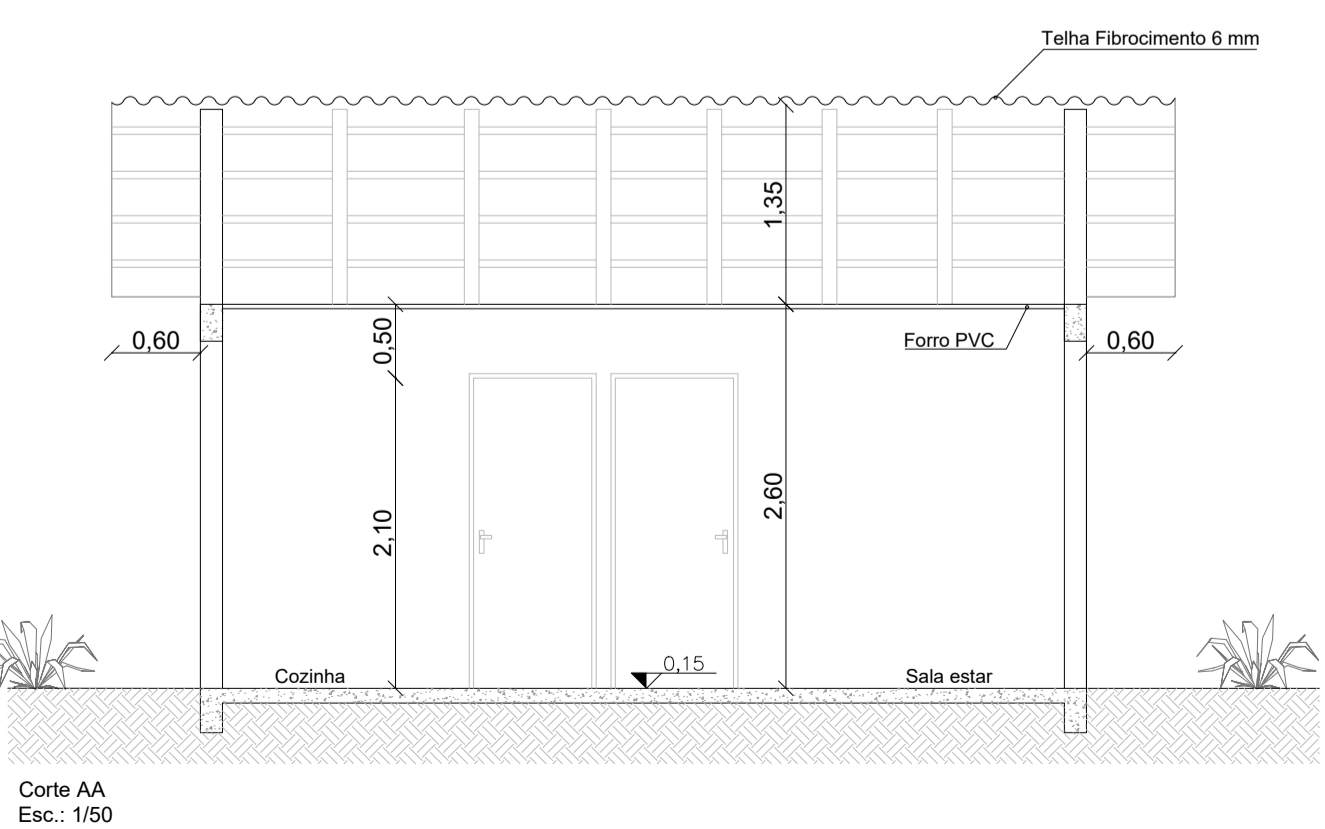
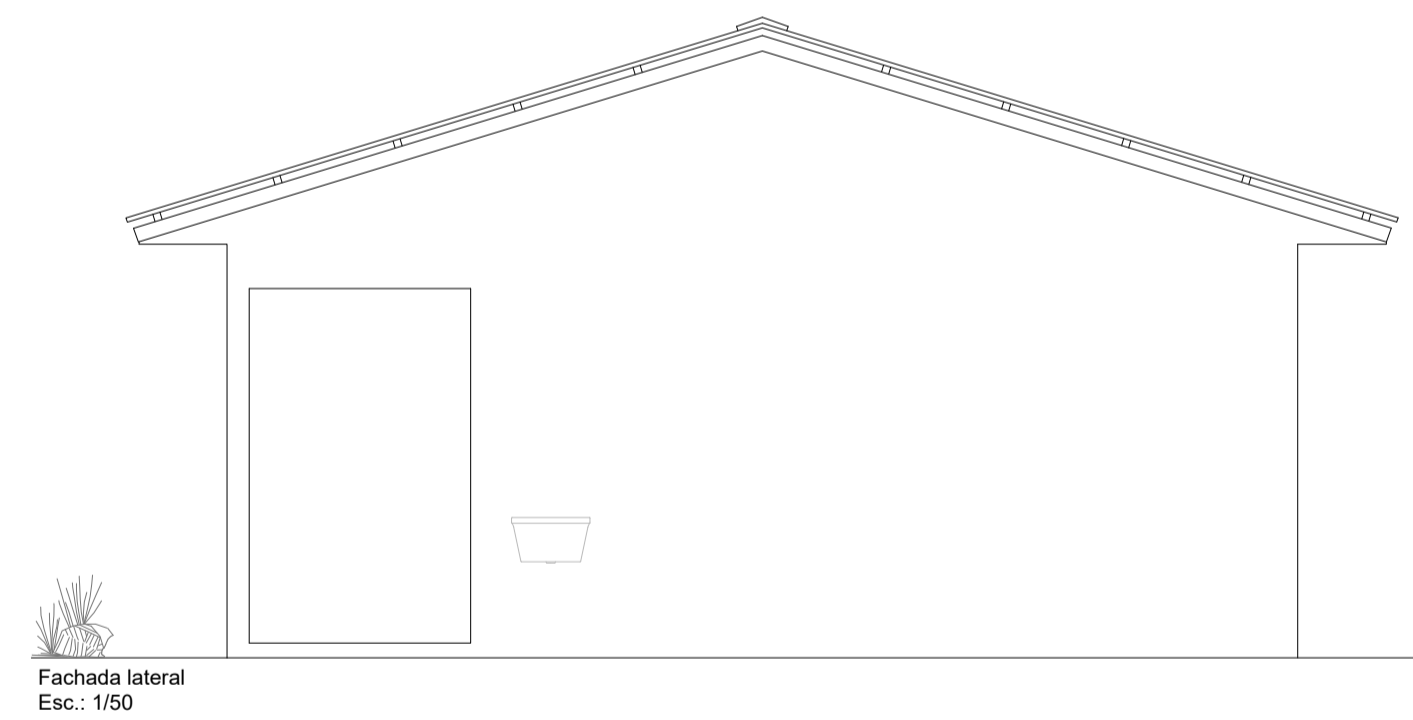
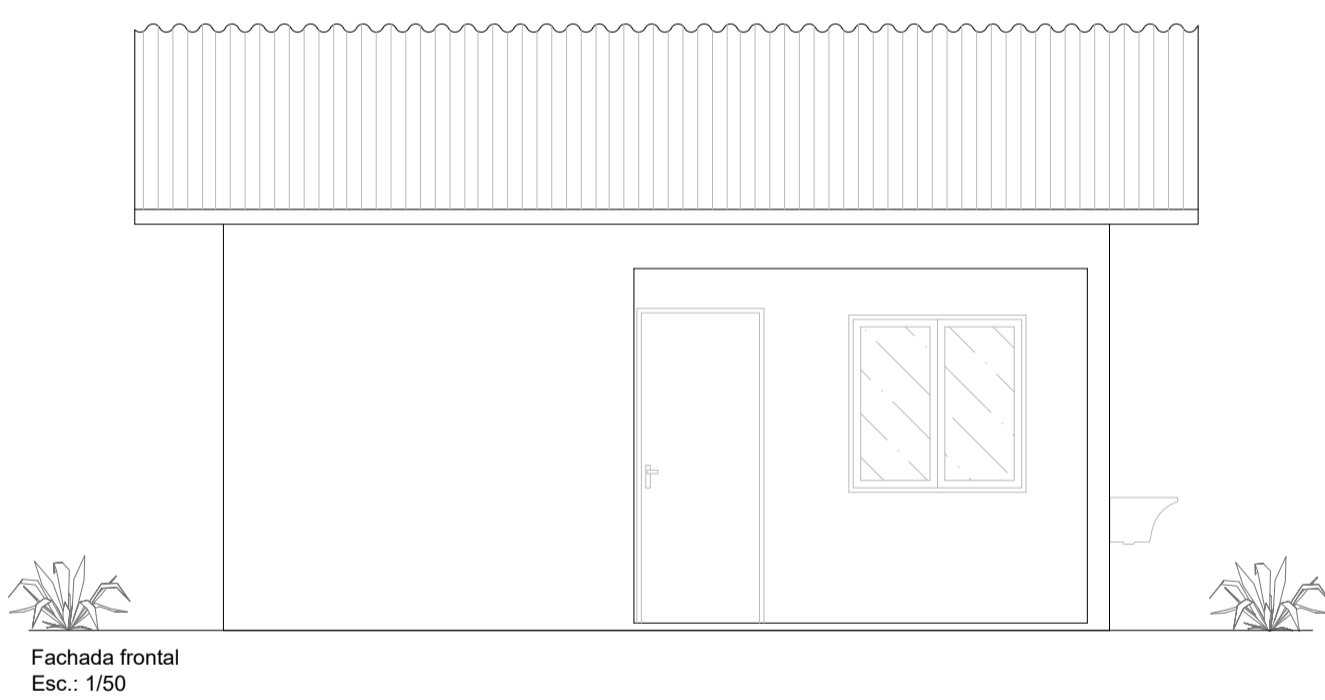
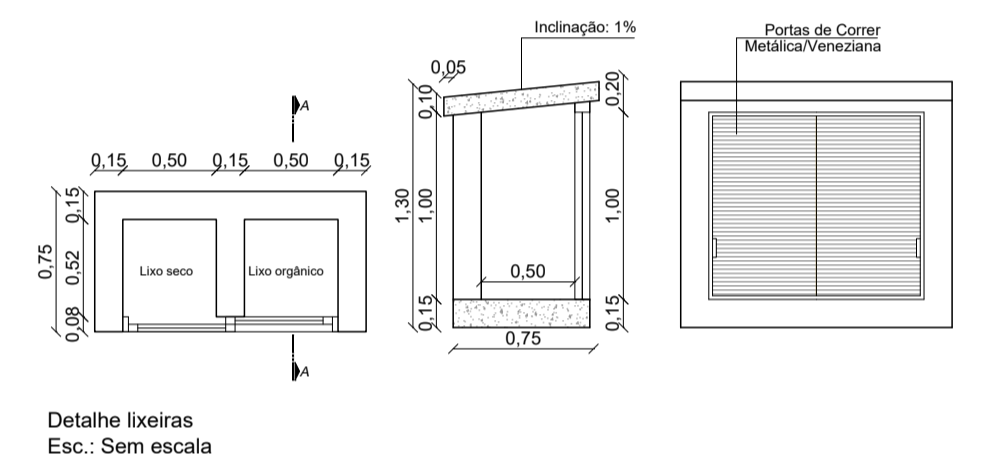
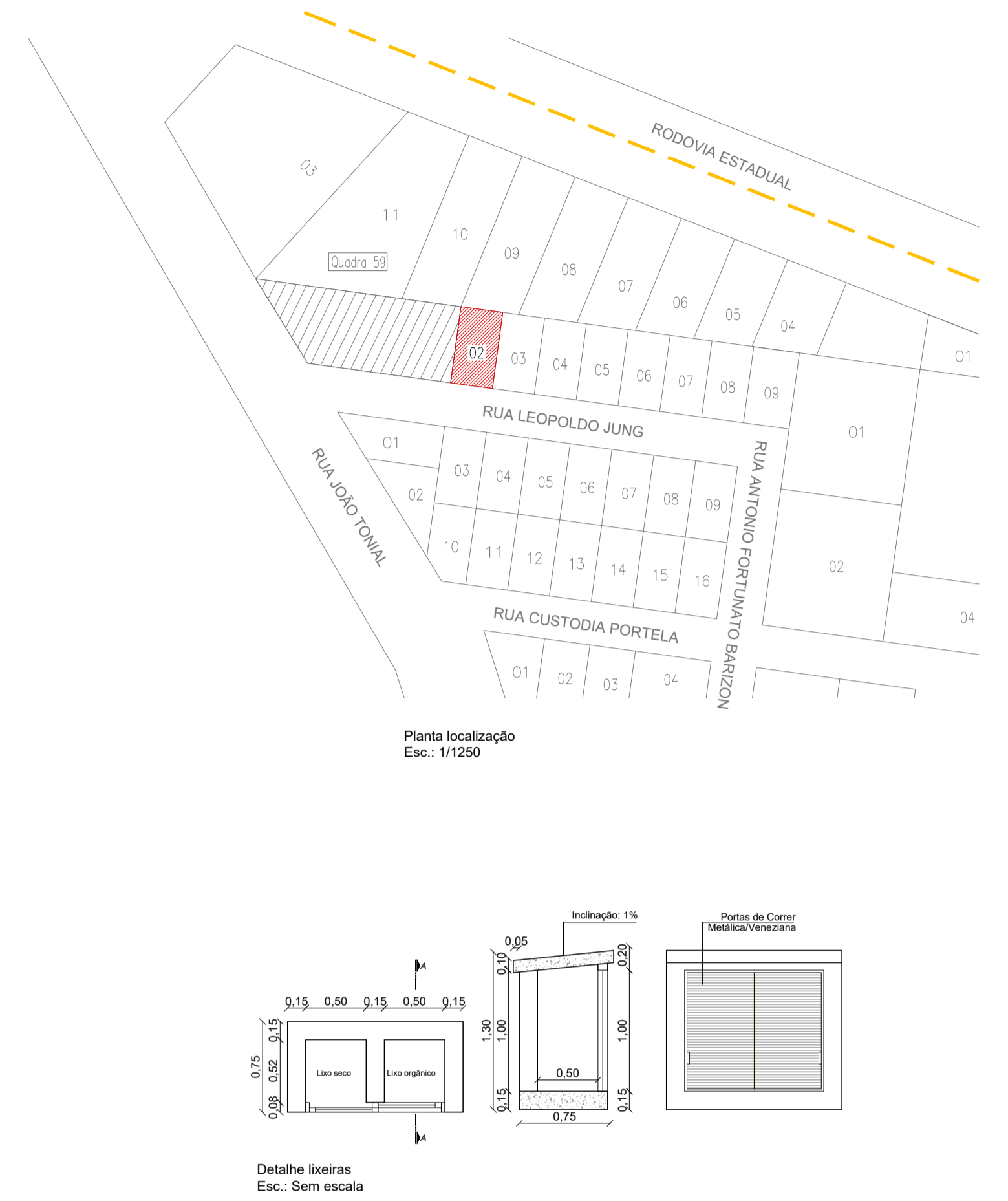
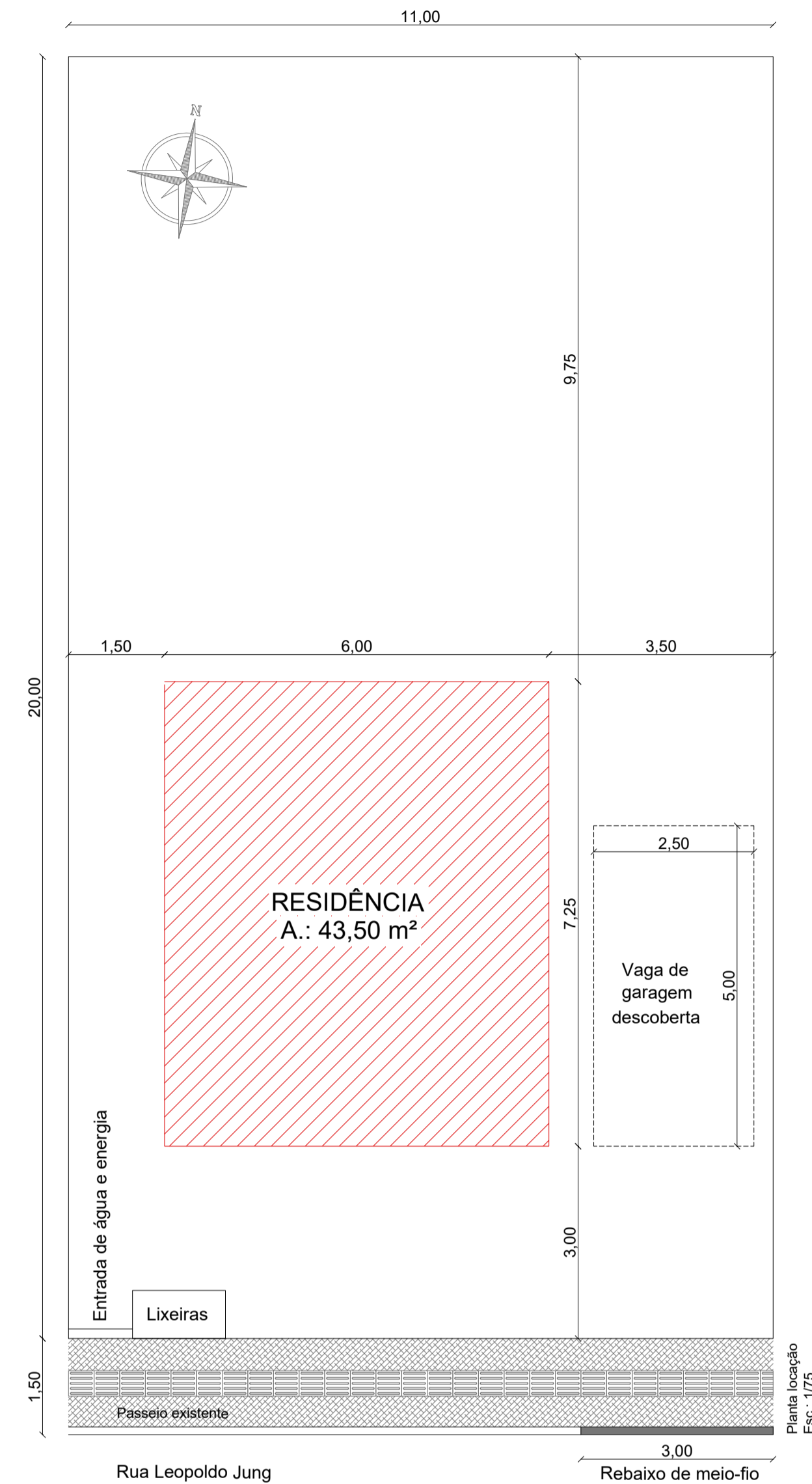
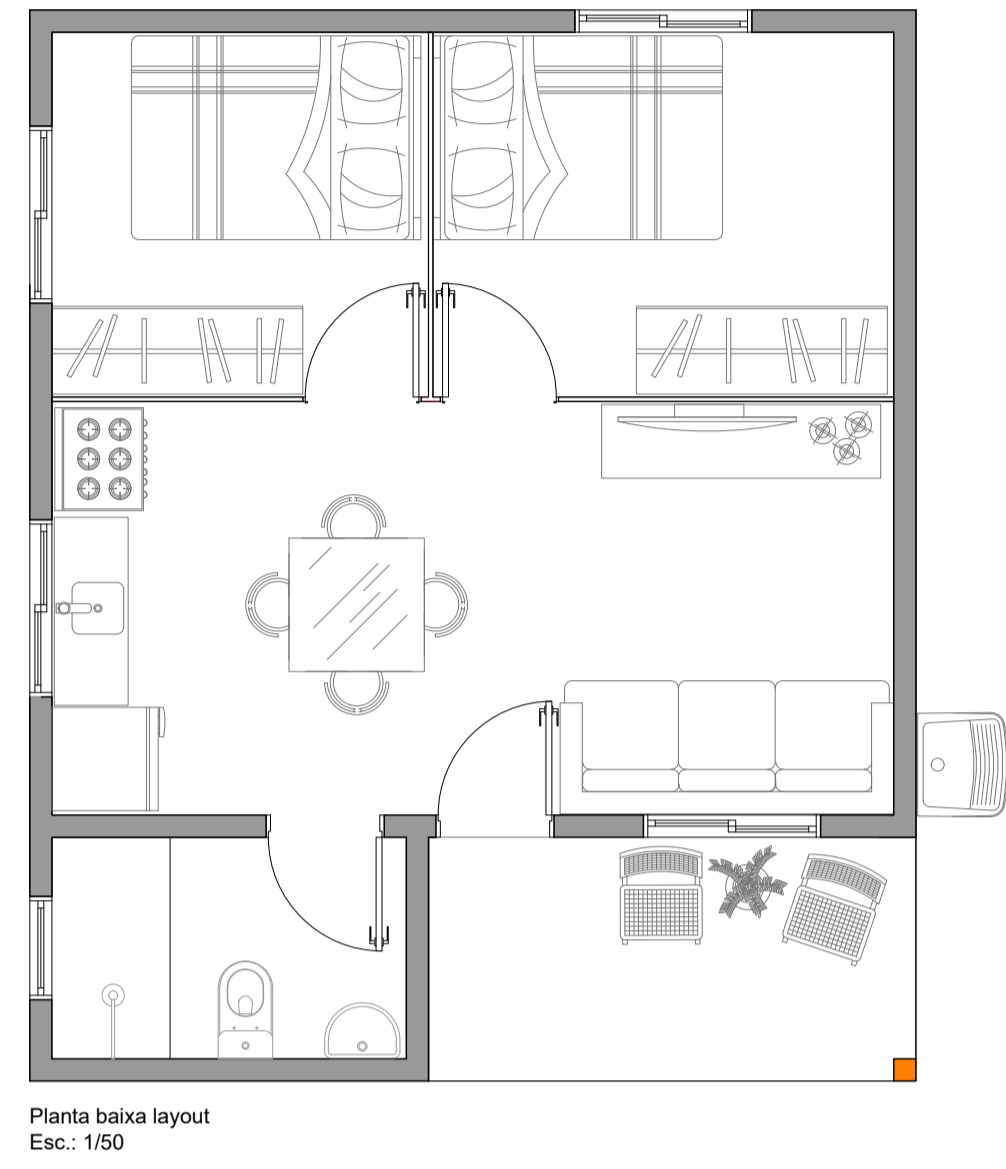
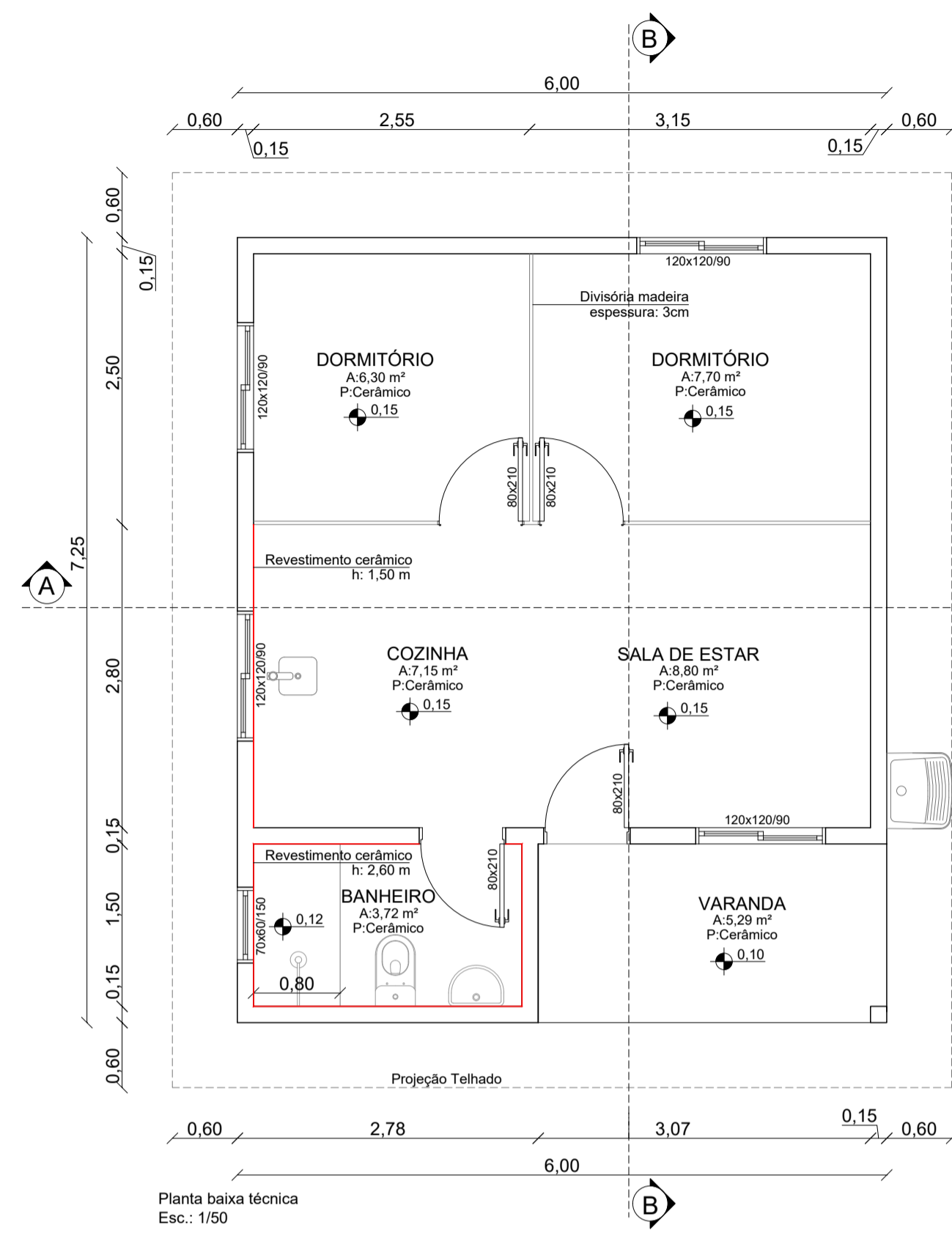


TABELA DE LEGISLAÇÃO

| LOCAL                  | A. CASA              | A. PROJEÇ.           | A. TERRENO           | T.A. | T.I    | T.O    |
|------------------------|----------------------|----------------------|----------------------|------|--------|--------|
| Terreno 02 - Quadra 59 | 43,50 m <sup>2</sup> | 60,84 m <sup>2</sup> | 220,00m <sup>2</sup> | 0,19 | 27,65% | 19,77% |



PROJETO ARQUITETÔNICO



|                |  |           |                                     |
|----------------|--|-----------|-------------------------------------|
| Obra:          | UNIDADE HABITACIONAL POPULAR<br>Rua Leopoldo Jung - Lote 02 Q-59, s/nº - Bom Jesus/SC                          | Data:     | 04/2024                             |
| Resp. Técnico: | Patrícia Camilotti - Arquiteta e Urbanista CAU A116659-0   | Escala:   | Indicada                            |
| Município:     | Bom Jesus/SC - CNPJ: 01.551.148/0001-87  | Área:     | 43,50 m <sup>2</sup>                |
| Especificação: | Planta de localização<br>Planta de situação<br>Planta baixa técnica<br>Planta baixa layout<br>Planta cobertura | Detalhes: | Fachadas<br>Cortes<br>Detalhamentos |
|                |  | Prancha:  | ARQ<br>01/01                        |