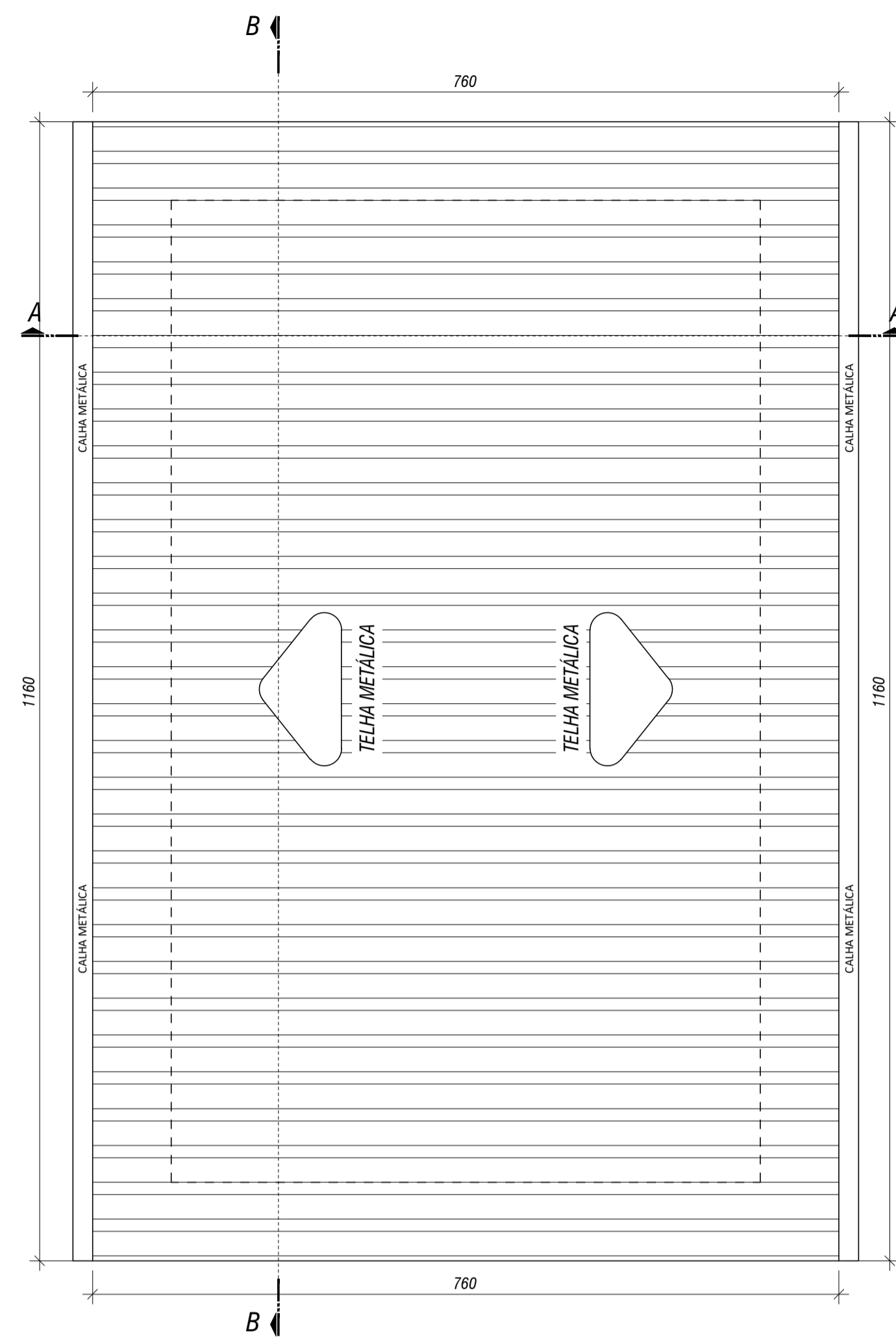
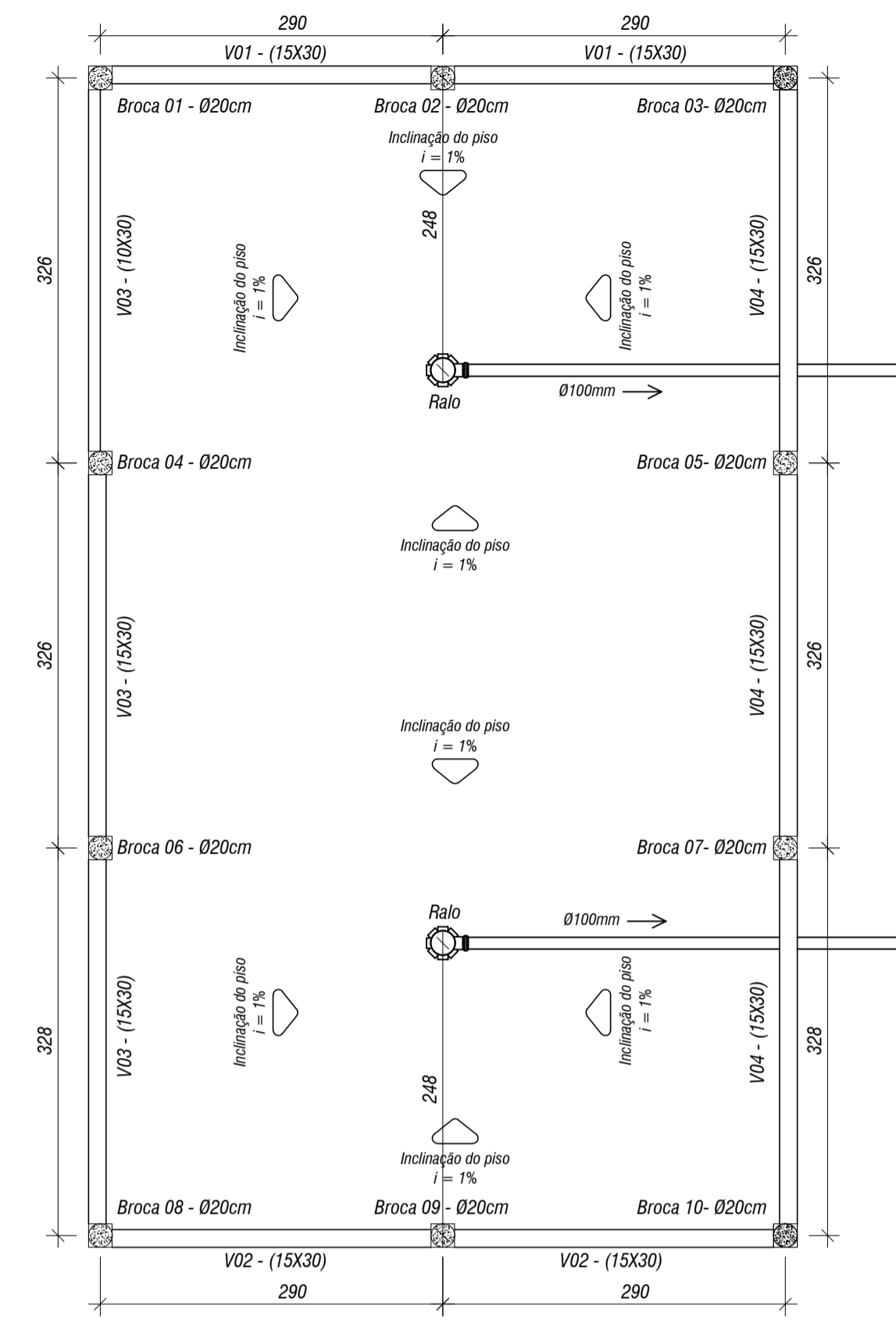


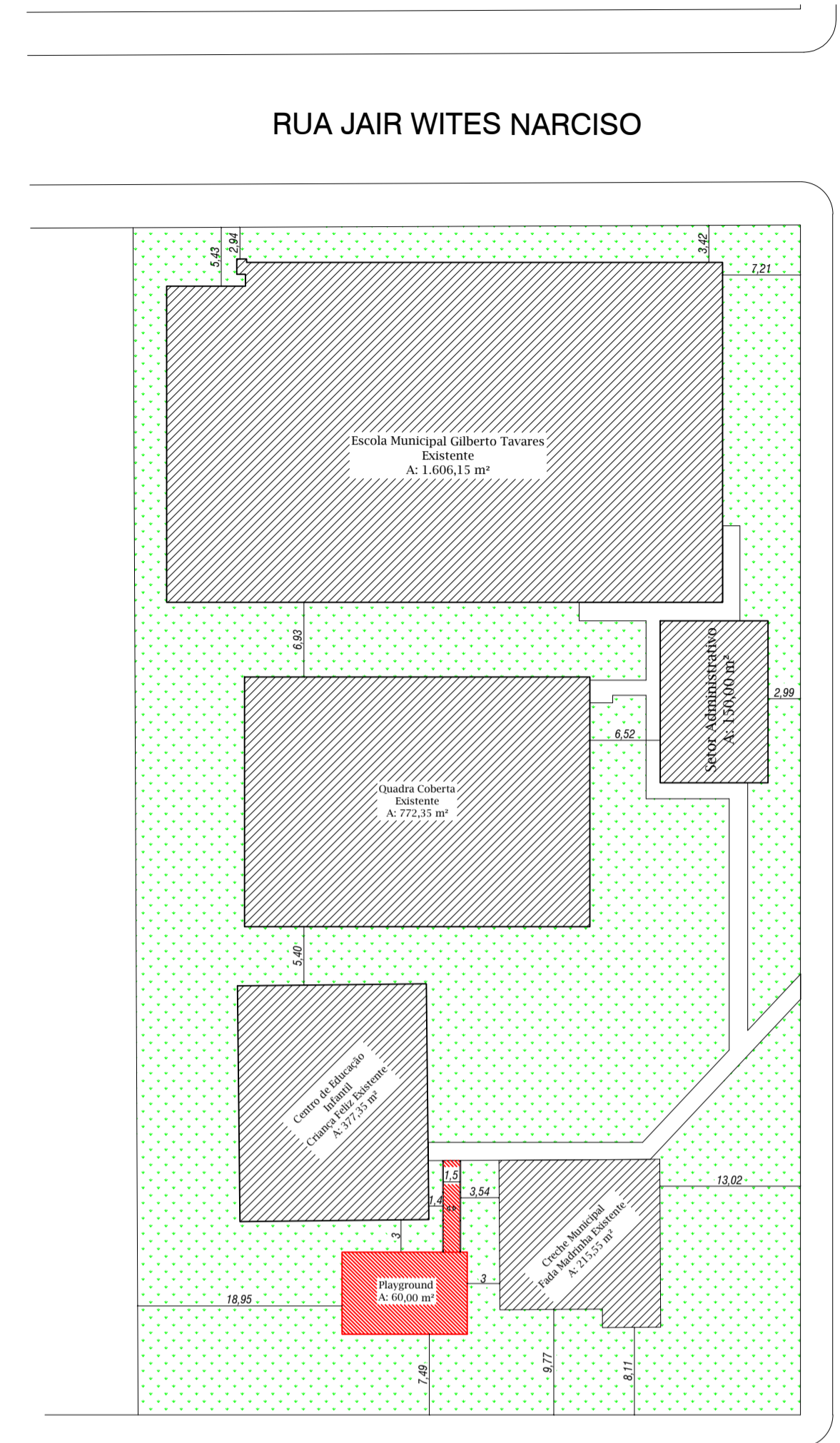
PLANTA BAIXA
ESC: 1/50



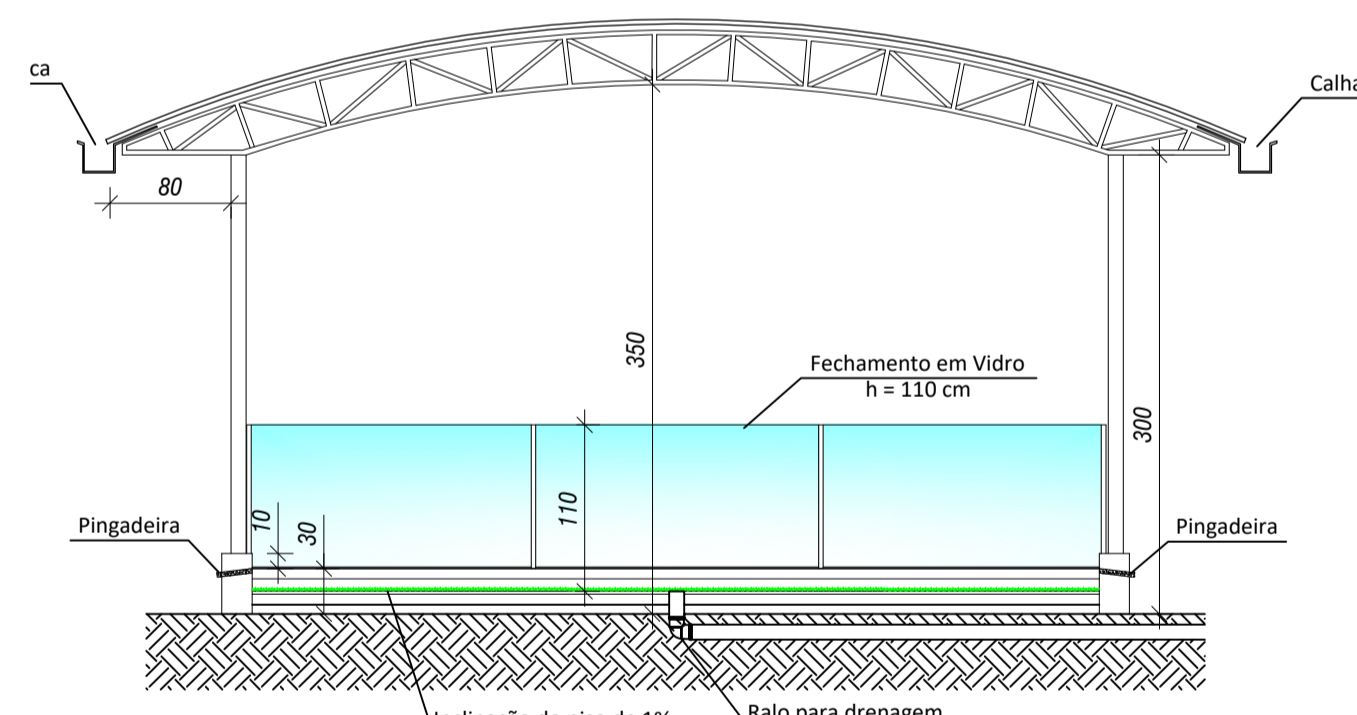
PLANTA DE COBERTURA
ESC: 1/50



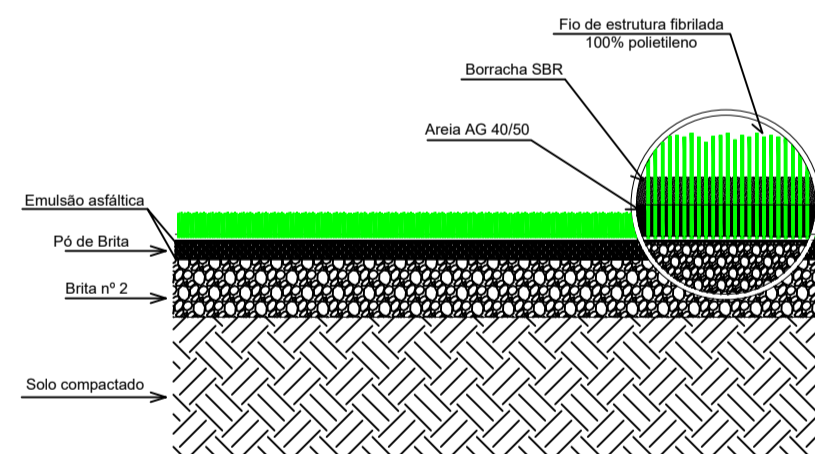
ESTRUTURAL
ESC: 1/50



PLANTA DE LOCAÇÃO
ESC: 1/500

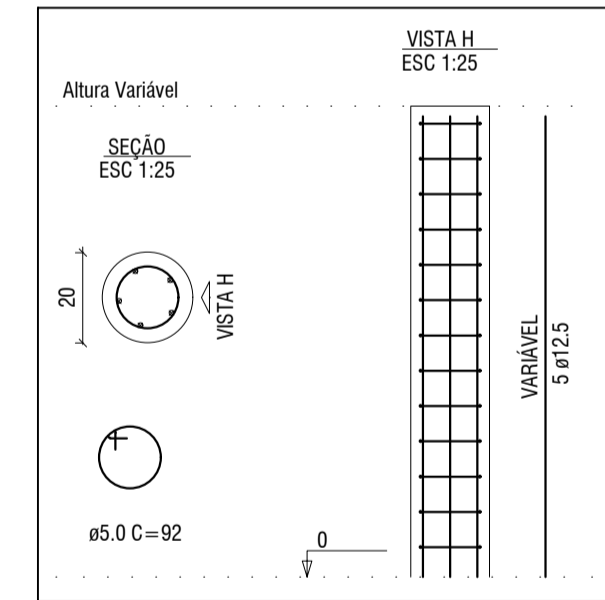


CORTE A-A
ESC: 1/50

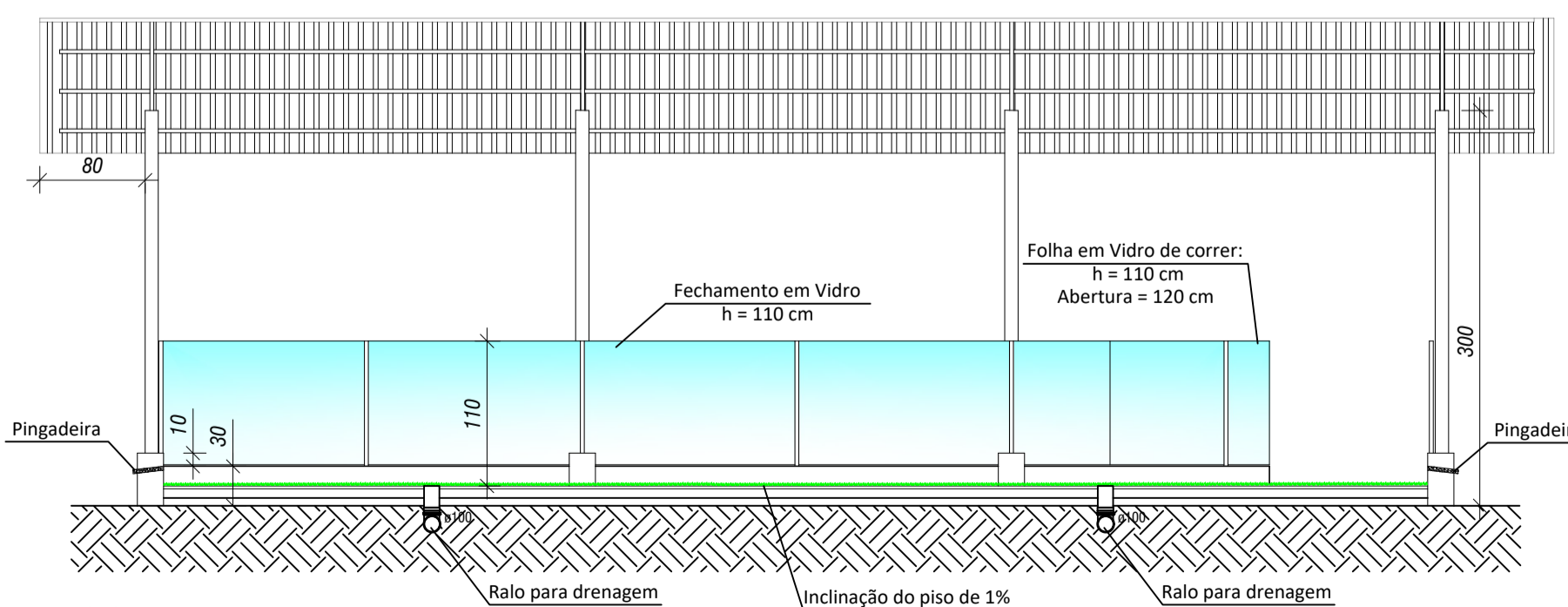
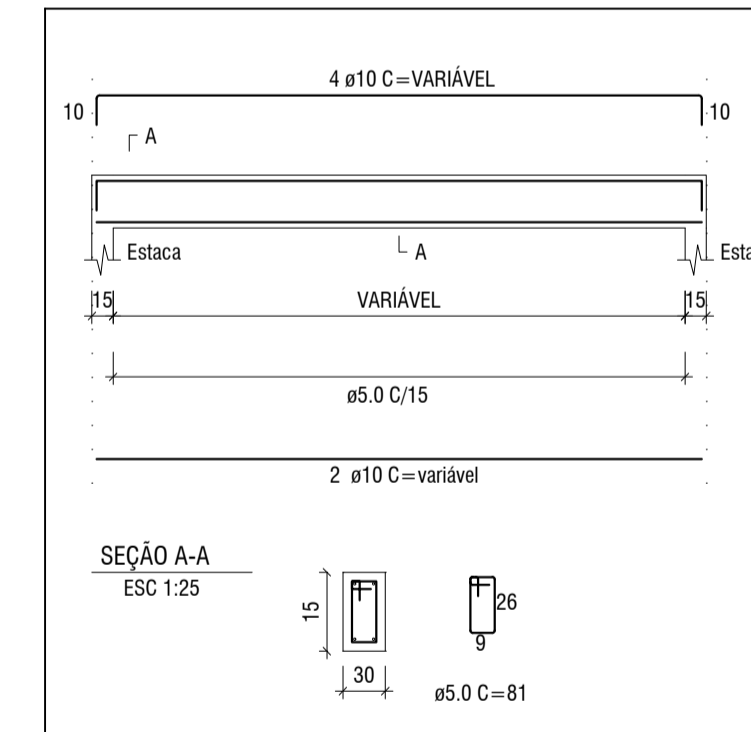


DETALHAMENTO GRAMA SINTÉTICA

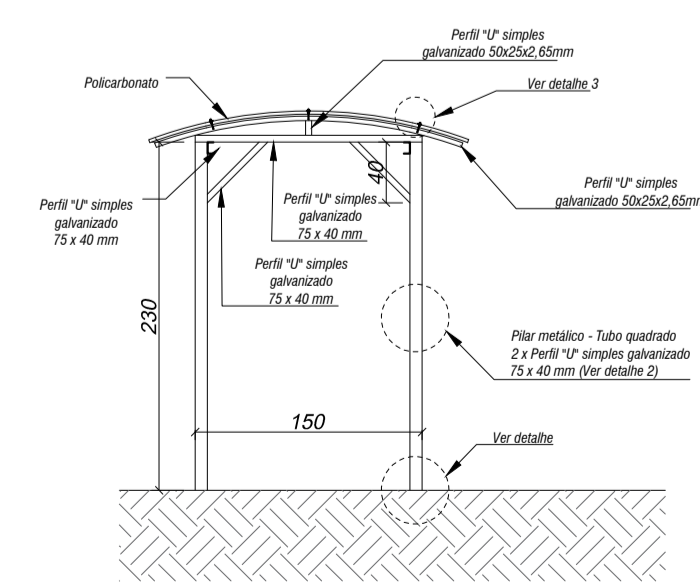
DETALHAMENTO - ESTACA BROCA E PILARES



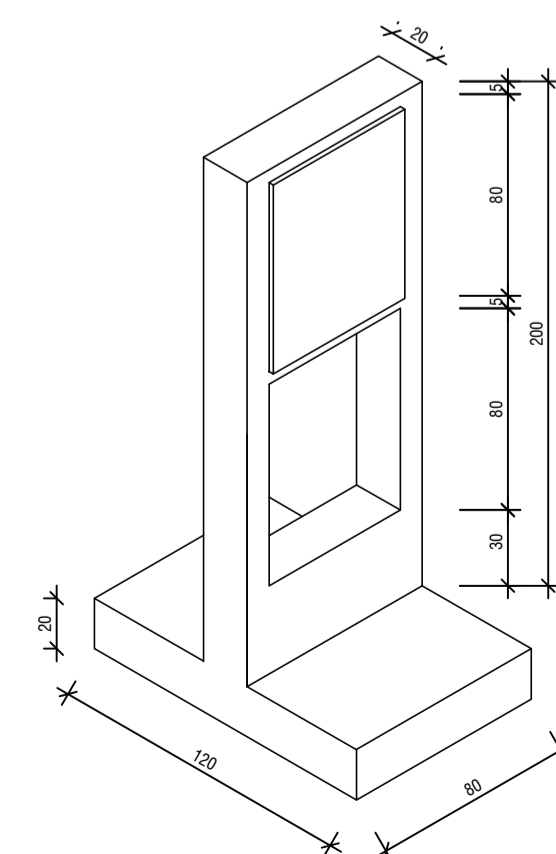
DETALHAMENTO - VIGA DE BALDRAME



CORTE B-B
ESC: 1/50

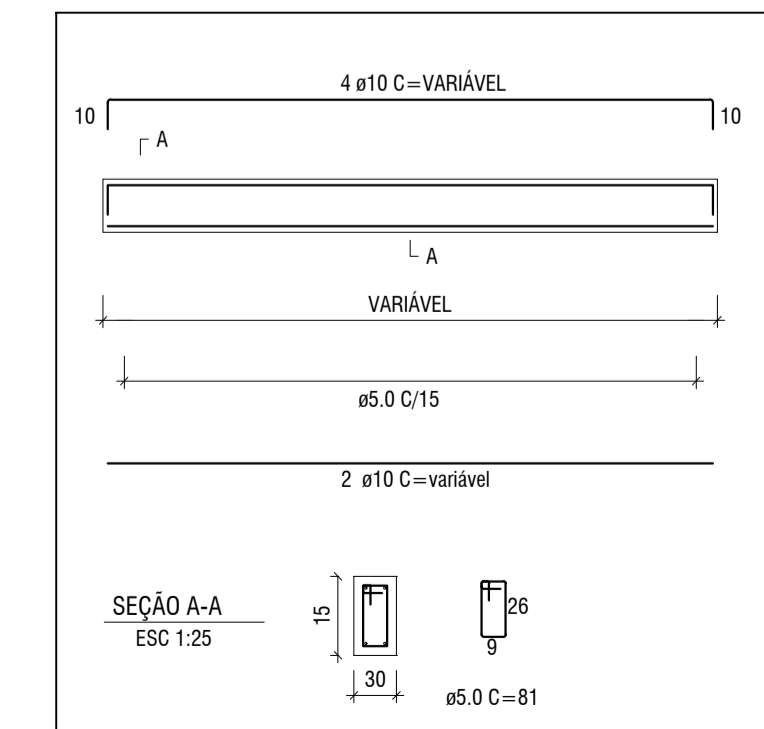


COBERTURA CALÇADA DE ACESSO
ESC: 1/50



TOTEM
Escala: 1/30

DETALHAMENTO - MURETA



GeoNorte
Projetos e Topografia

GEONORTE PROJETOS LTDA.
Av. Brasil, 79, sala 09, Centro - Xanxerê (SC) - 89820-000
www.geonorte.net.br / contato@geonorte.net.br
Telefone: (49) 3433-8176

PROJETO:
PLAYGROUND PARA EDUCAÇÃO INFANTIL

LOCALIDADES:
MUNICÍPIO: Bom Jesus
DATA: 11/2023

ESTADO UF: SC
ESCALA: indicada

Conteúdo:
PLANTA BAIXA ARQUITETÔNICA E ESTRUTURAL
PLANTA DE LOCAÇÃO
PLANTA DE COBERTURA
CORTES E DETALHAMENTOS

Folha:
01/01

Prop.: PREFEITURA MUNICIPAL DE BOM JESUS - SC
CNPJ: 01.551.148/0001-87

Resp. Tec.: CARLO ANTUNES DOS SANTOS
ENGENHEIRO CIVIL
CREA-SC 123.879-1

