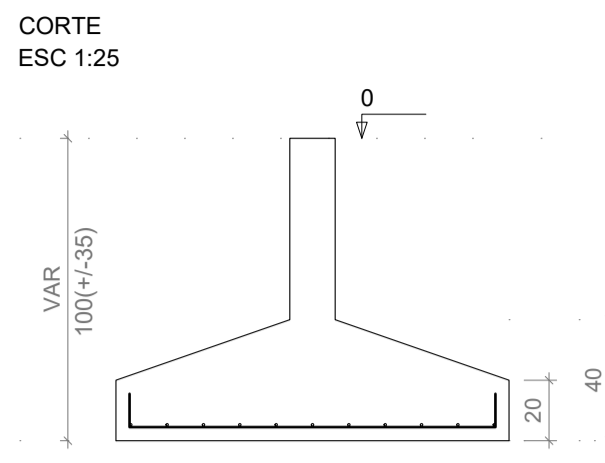
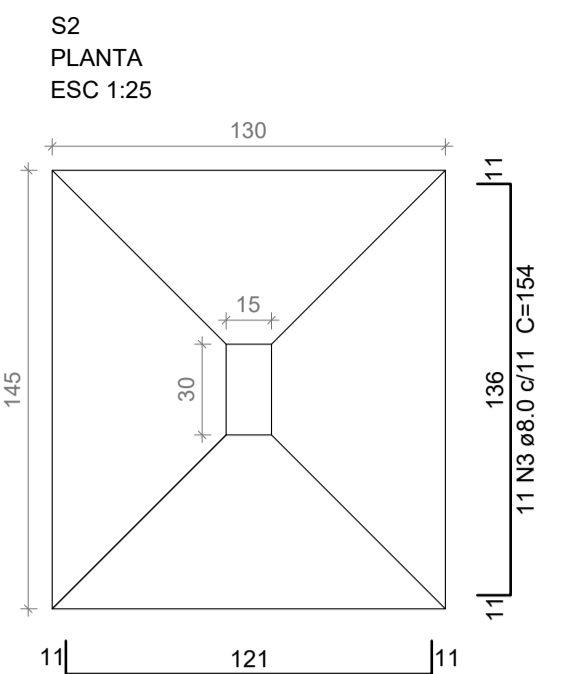
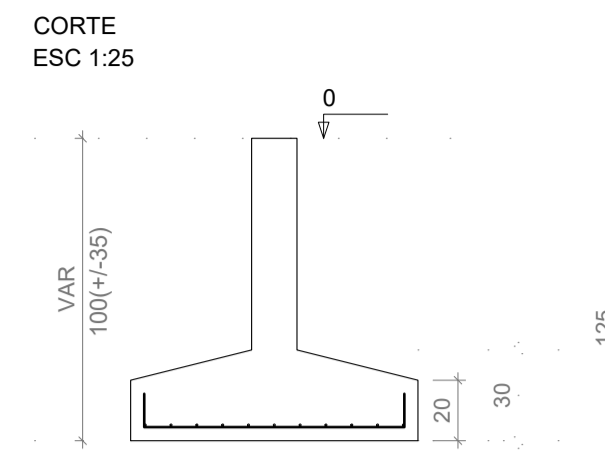
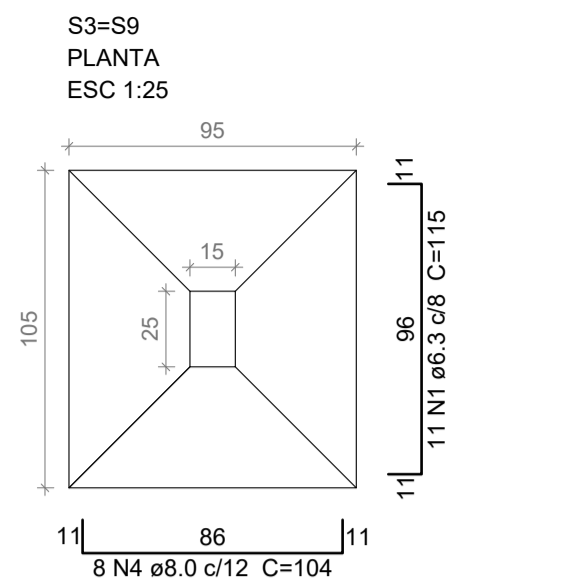


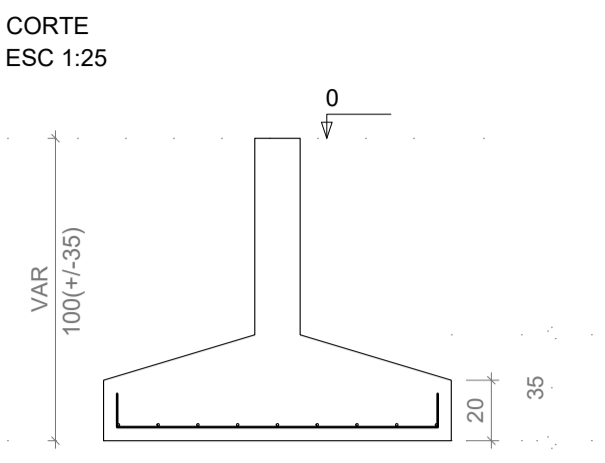
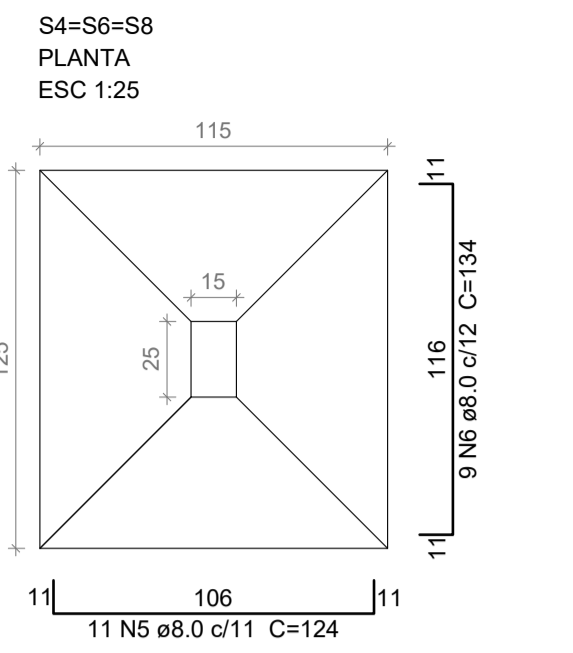
Solo com capacidade de suporte > 1.20 kgf/cm²
Solo compactado sobre a sapata
peso específico > 1600.00 kgf/m³



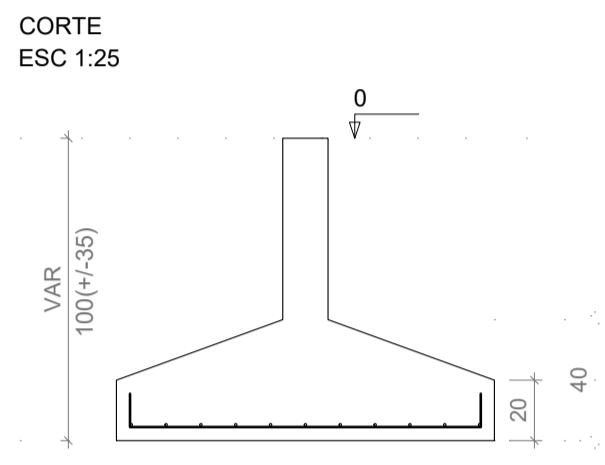
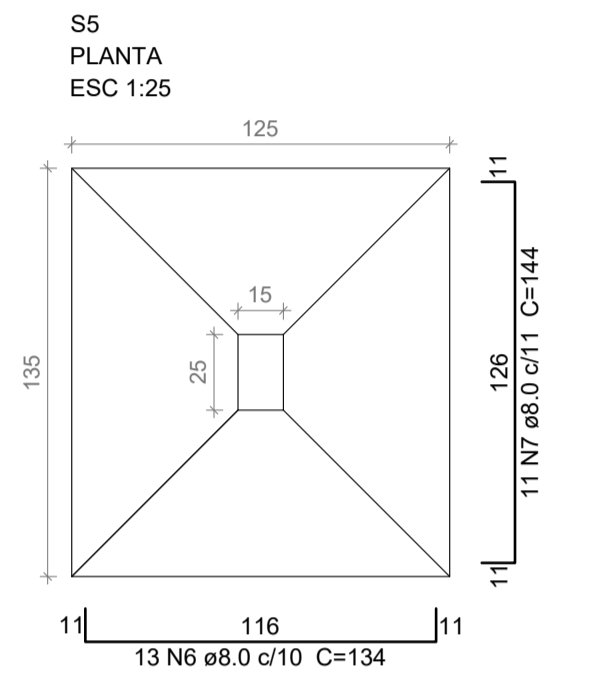
Solo com capacidade de suporte > 1.20 kgf/cm²
Solo compactado sobre a sapata
peso específico > 1600.00 kgf/m³



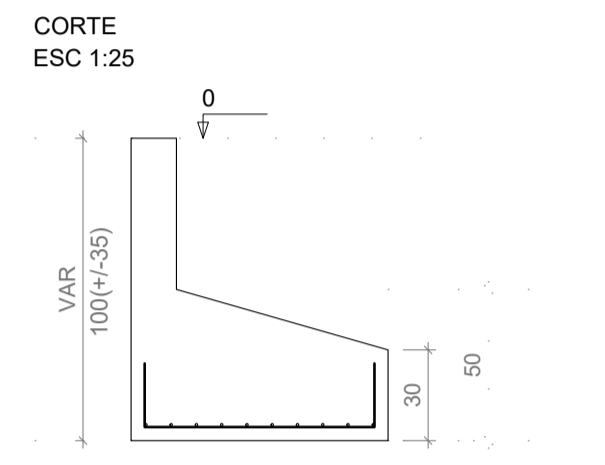
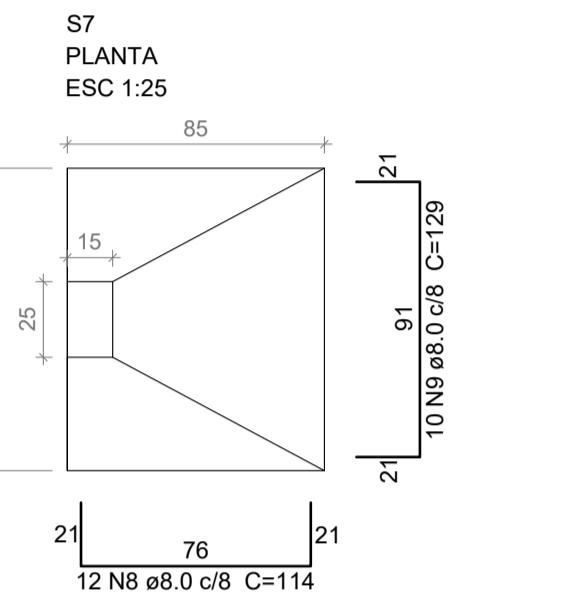
Solo com capacidade de suporte > 1.20 kgf/cm²
Solo compactado sobre a sapata
peso específico > 1600.00 kgf/m³



Solo com capacidade de suporte > 1.20 kgf/cm²
Solo compactado sobre a sapata
peso específico > 1600.00 kgf/m³



Solo com capacidade de suporte > 1.20 kgf/cm²
Solo compactado sobre a sapata
peso específico > 1600.00 kgf/m³



Solo com capacidade de suporte > 1.20 kgf/cm²
Solo compactado sobre a sapata
peso específico > 1600.00 kgf/m³

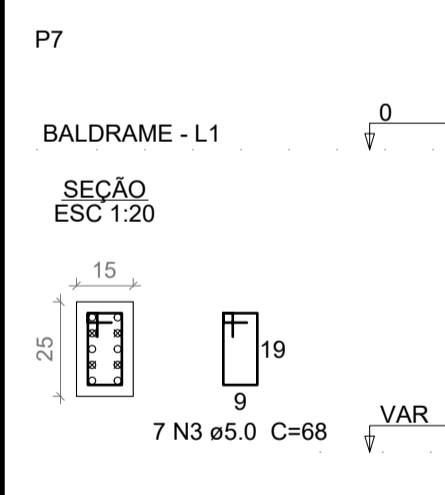
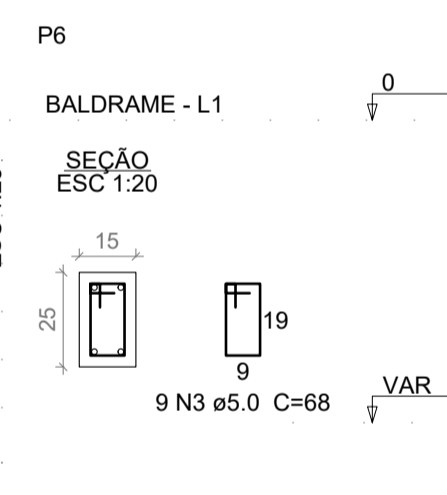
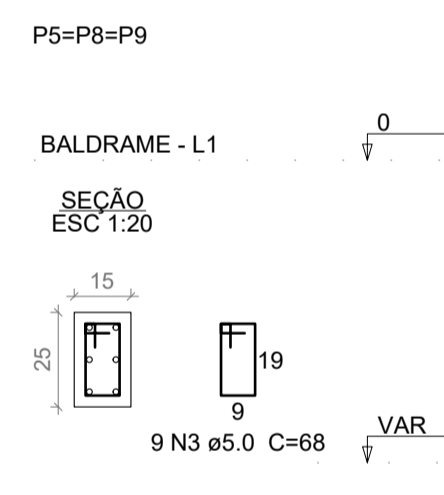
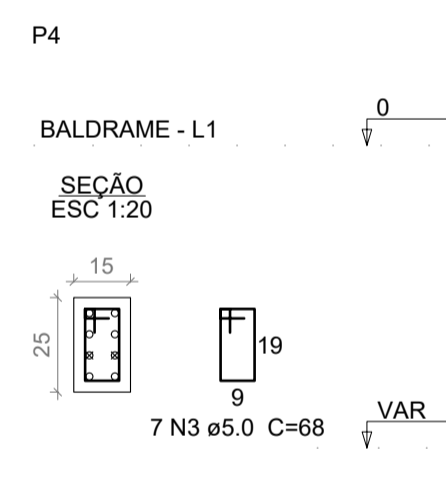
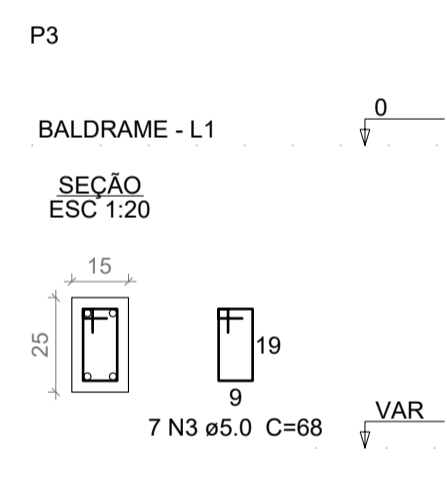
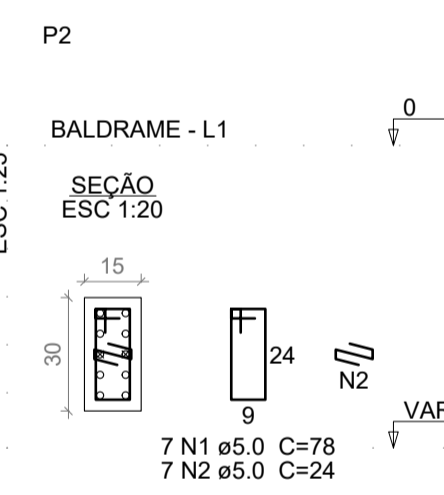
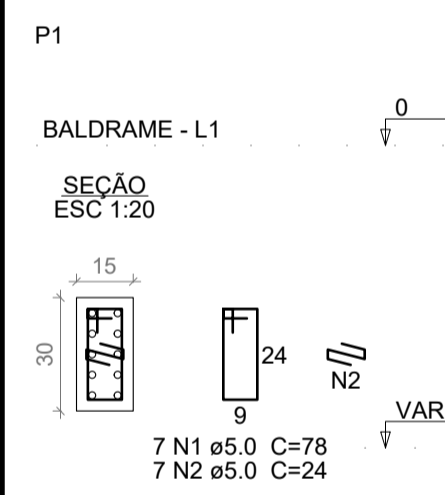
Relação do aço

AÇO	N	DIAM (mm)	QUANT	C.UNIT (cm)	C.TOTAL (cm)
CA50	1	6.3	22	115	2530
	2	8.0	14	139	1946
	3	8.0	11	154	1694
	4	8.0	16	104	1664
	5	8.0	33	124	4092
	6	8.0	40	134	5360
	7	8.0	11	144	1584
	8	8.0	12	114	1368
	9	8.0	10	129	1290
	10	10.0	9	158	1422
	11	10.0	12	143	1716

Resumo do aço

AÇO	DIAM (mm)	C.TOTAL (m)	PESO + 10 % (kg)
CA50	6.3	25.3	6.8
	8.0	190	82.5
	10.0	31.4	21.3
PESO TOTAL (kg)			
CA50	110.6		

Volume de concreto (C-30) = 3.49 m³
Área de forma = 9.77 m²



Relação do aço

AÇO	N	DIAM (mm)	QUANT	C.UNIT (cm)	C.TOTAL (cm)
CA60	1	5.0	14	78	1092
	2	5.0	14	24	336
	3	5.0	57	68	3876
CA50	4	10.0	22	VAR	VAR
	5	12.5	10	VAR	VAR
	6	12.5	4	VAR	VAR
	7	12.5	18	VAR	VAR
	8	12.5	4	VAR	VAR
	9	12.5	6	VAR	VAR

Resumo do aço

AÇO	DIAM (mm)	C.TOTAL (m)	PESO + 10 % (kg)
CA50	10.0	32.4	21.9
	12.5	76.2	80.7
CA60	5.0	53.1	9
PESO TOTAL (kg)			
CA50	102.6		
CA60	9		

Volume de concreto (C-30) = 0.35 m³
Área de forma = 7.4 m²

PROJETO ESTRUTURAL - EDIFICAÇÃO 3



Obra:	GARAGEM DE MÁQUINAS MUNICIPAL Rua Virgílio Sabino da Silva esquina com Rua Augusto Bertochi, s/nº - Bom Jesus/SC	Data:	07/2022
Resp. Técnico:	Amanda Cunico Carneiro - Engenheira Civil - CREA/SC 163289-6	Escala:	Indicada
Município:	Bom Jesus - CNPJ 01.551.148/0001-87	Área:	
Especificação: Sapatas Pilaretes		Desenho:	Amanda
		Prancha:	EST - 02