

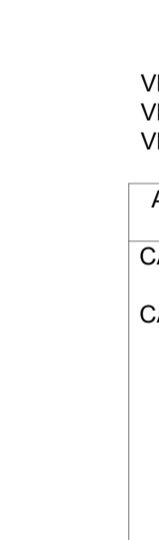
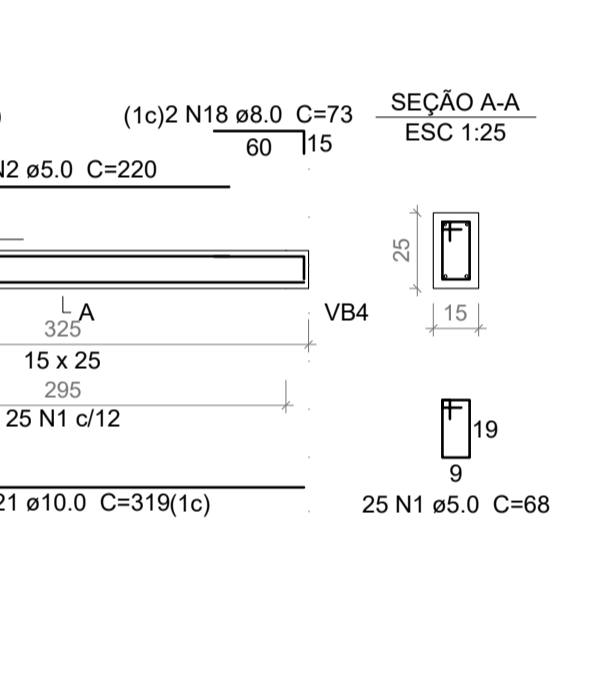
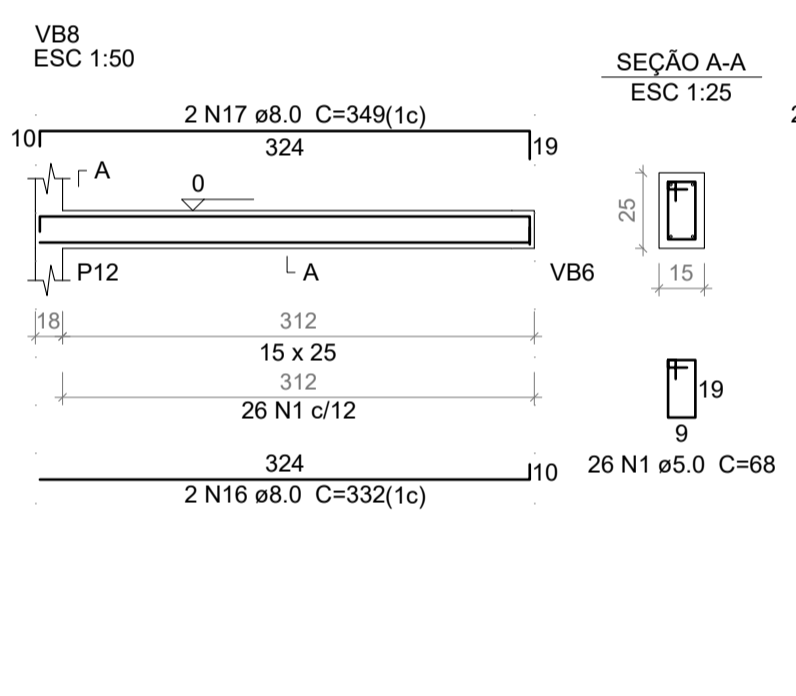
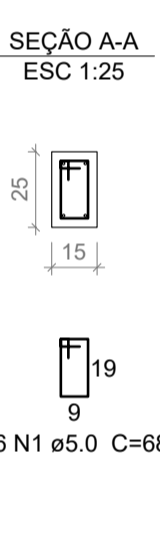
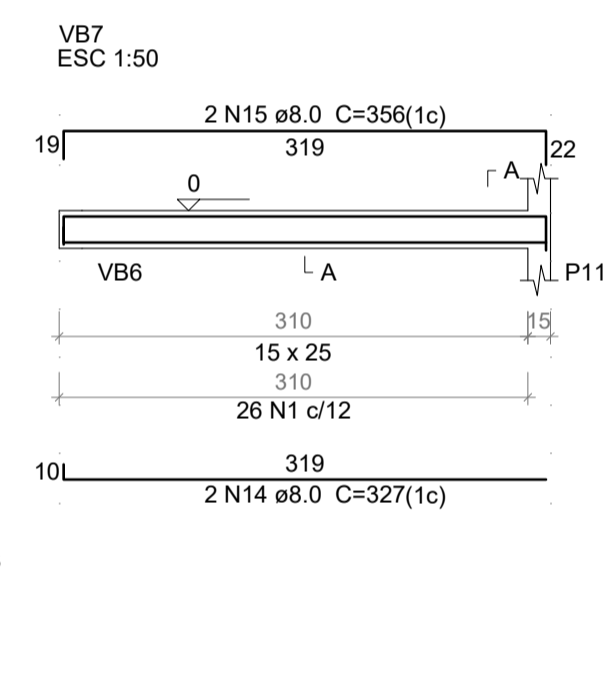
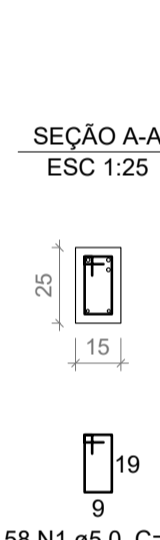
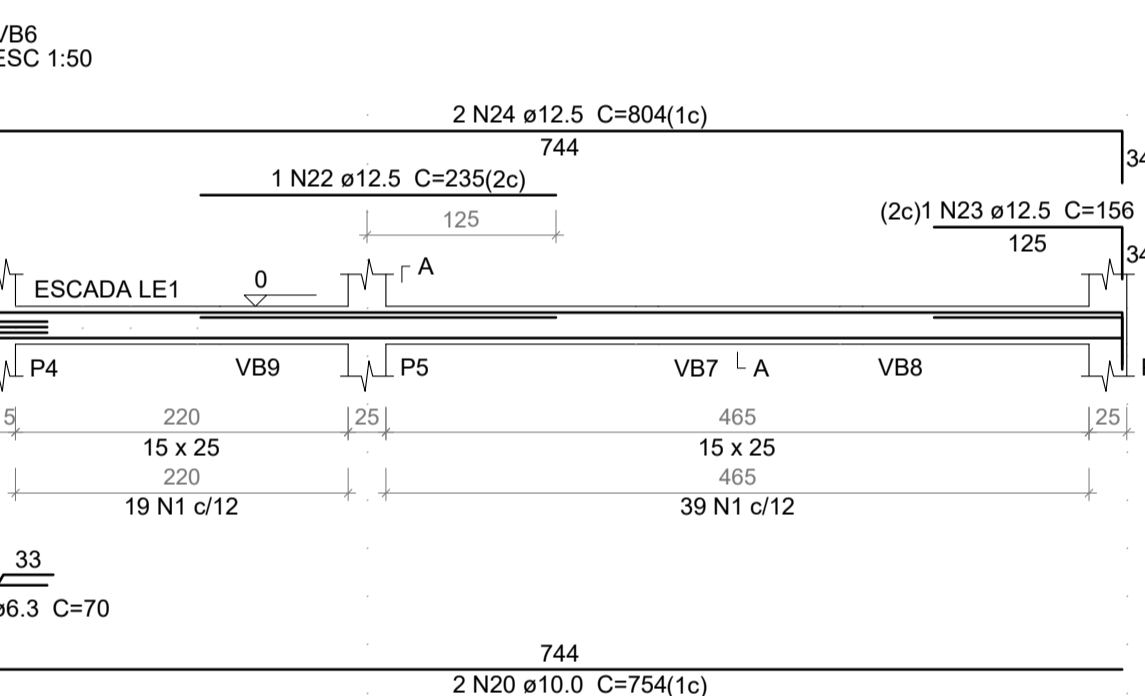
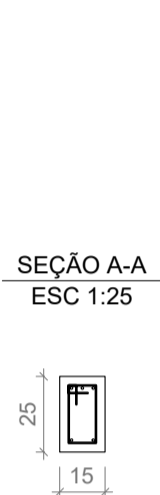
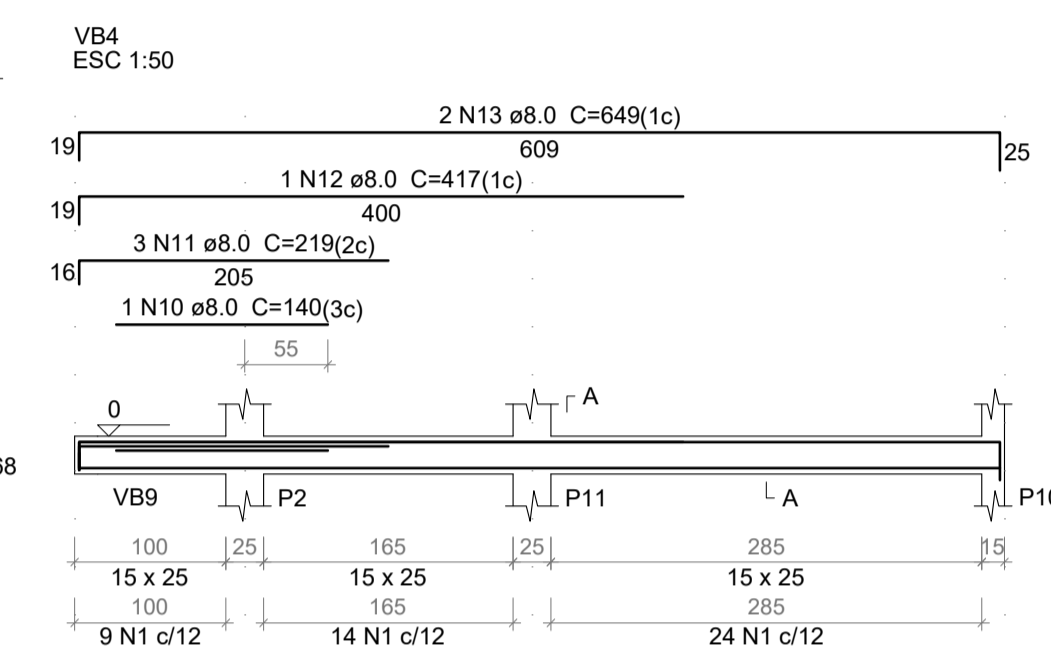
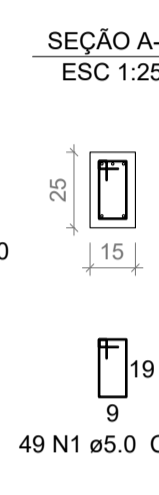
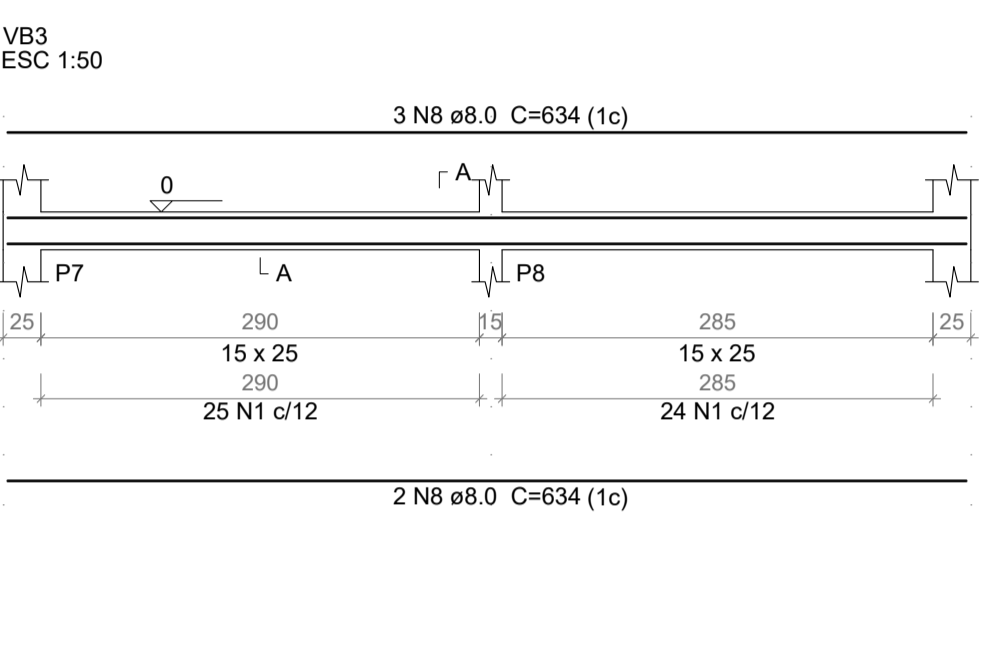
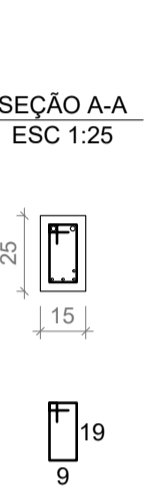
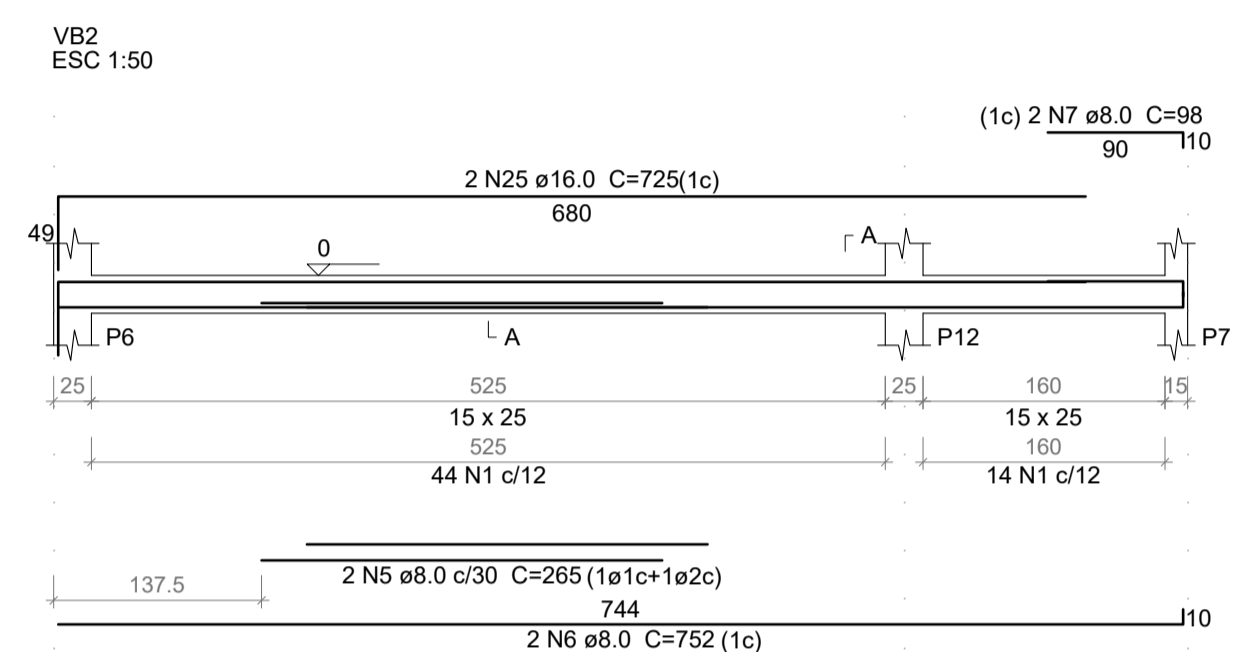
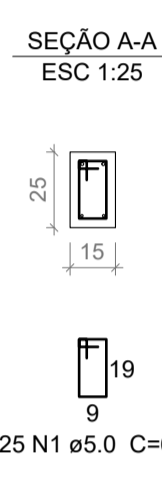
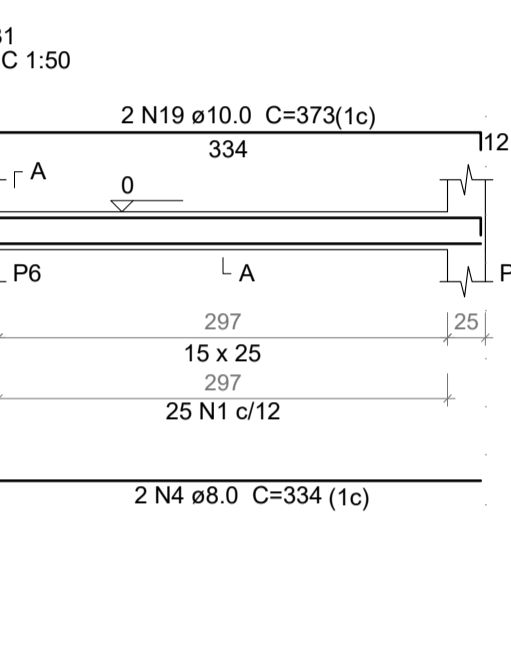
Relação do aço

AÇO	N	DIAM (mm)	QUANT	C.UNIT (cm)	C.TOTAL (cm)
CA50	1	6.3	39	125	4875
	2	8.0	60	119	7140
	3	8.0	30	129	3870
	4	8.0	7	94	658
	5	8.0	6	104	624
	6	8.0	16	109	1744
	7	8.0	14	119	1666

Resumo do aço

AÇO	DIAM (mm)	C.TOTAL (m)	PESO + 10 % (kg)
CA50	6.3	48.8	13.1
	8.0	157.1	68.2
PESO TOTAL (kg)			
CA50		81.3	

Volume de concreto (C-30) = 2.56 m³
Área de forma = 8.16 m²



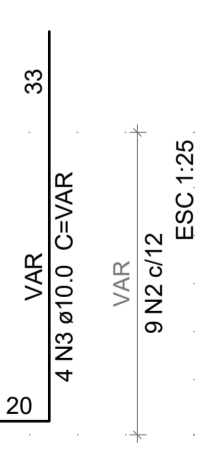
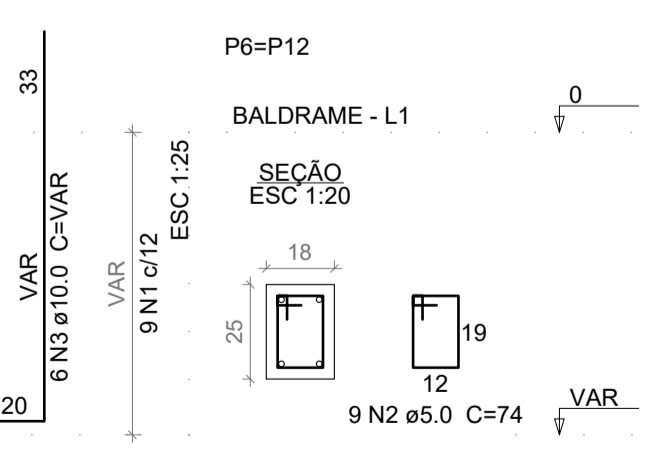
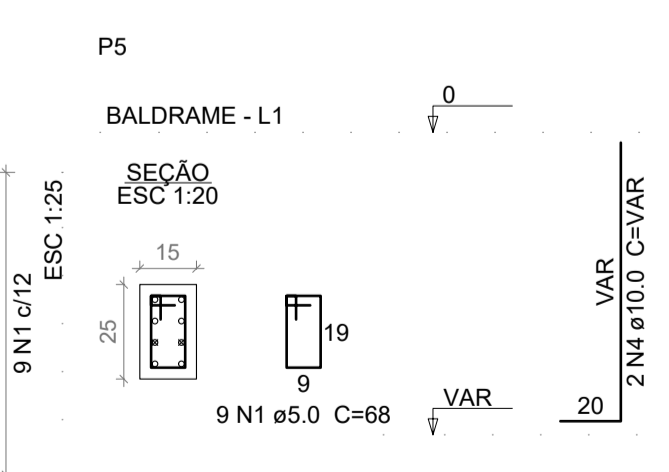
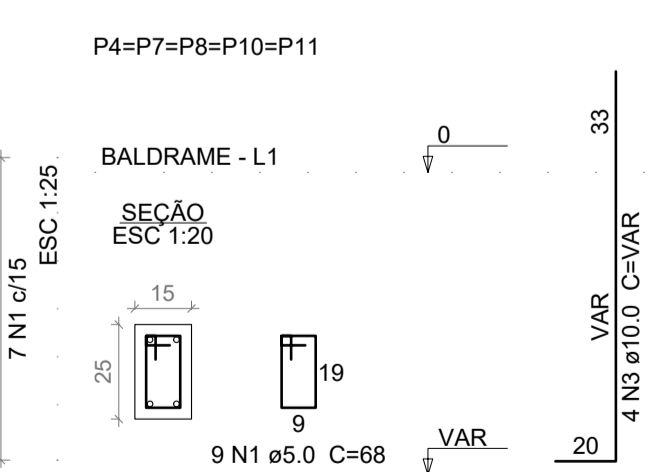
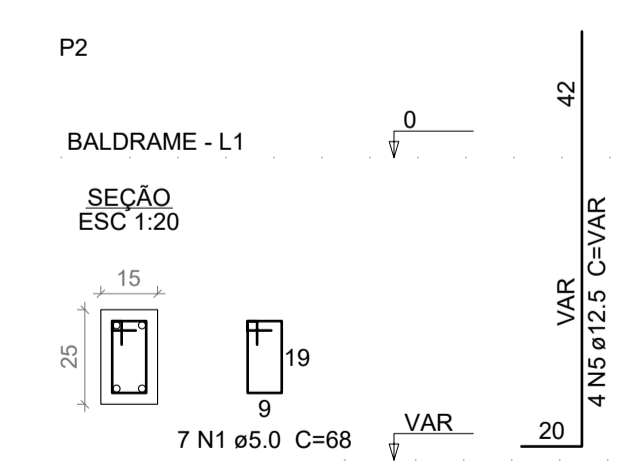
Relação do aço

AÇO	N	DIAM (mm)	QUANT	C.UNIT (cm)	C.TOTAL (cm)
CA60	1	5.0	314	68	21352
	2	5.0	2	220	440
	3	6.3	3	70	210
	4	8.0	2	334	668
	5	8.0	2	265	530
	6	8.0	2	752	1504
	7	8.0	2	98	196
	8	8.0	5	634	3170
	9	8.0	2	617	1234
	10	8.0	1	140	140
	11	8.0	3	219	657
	12	8.0	1	417	417
	13	8.0	2	649	1298
	14	8.0	2	327	654
	15	8.0	2	356	712
	16	8.0	2	332	664
	17	8.0	2	349	698
	18	8.0	4	73	292
	19	10.0	2	373	746
	20	10.0	2	754	1508
	21	10.0	2	319	638
	22	12.5	1	235	235
	23	12.5	1	156	156
	24	12.5	2	804	1608
	25	16.0	2	725	1450

Resumo do aço

AÇO	DIAM (mm)	C.TOTAL (m)	PESO + 10 % (kg)
CA50	6.3	2.1	0.6
	8.0	128.4	55.7
	10.0	29	19.5
	12.5	20	21.2
	16.0	14.5	25.2
CA60	5.0	218	36.9
PESO TOTAL (kg)			
CA50		122.2	
CA60		36.9	

Volume de concreto (C-30) = 1.53 m³
Área de forma = 26.49 m²



Relação do aço

AÇO	N	DIAM (mm)	QUANT	C.UNIT (cm)	C.TOTAL (cm)
CA60	1	5.0	61	68	4148
	2	5.0	18	74	1332
	3	10.0	34	VAR	VAR
	4	10.0	2	VAR	VAR
	5	12.5	4	VAR	VAR

Resumo do aço

AÇO	DIAM (mm)	C.TOTAL (m)	PESO + 10 % (kg)
CA50	10.0	52.2	35.4
	12.5	6.2	6.6
CA60	5.0	54.8	9.3
PESO TOTAL (kg)			
CA50		42	
CA60		9.3	

Volume de concreto (C-30) = 0.35 m³
Área de forma = 7.32 m²

PROJETO ESTRUTURAL - EDIFICAÇÃO 1



Obra: **GARAGEM DE MÁQUINAS MUNICIPAL**
Rua Virgílio Sabino da Silva esquina com Rua Augusto Bertochi, s/nº - Bom Jesus/SC

Data: **07/2022**

Escala: **Indicada**

Resp. Técnico: **Amanda Cunico Carneiro - Engenheira Civil - CREA/SC 163289-6**

Município: **Bom Jesus - CNPJ 01.551.148/0001-87**

Desenho: **Amanda**

Especificação: Sapatas pavimento baldrame
Pilares
Vigas Baldrame

Prancha: **EST - 02**