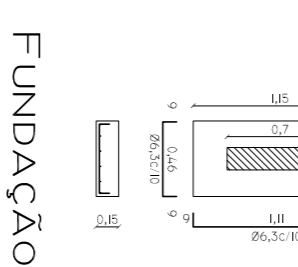
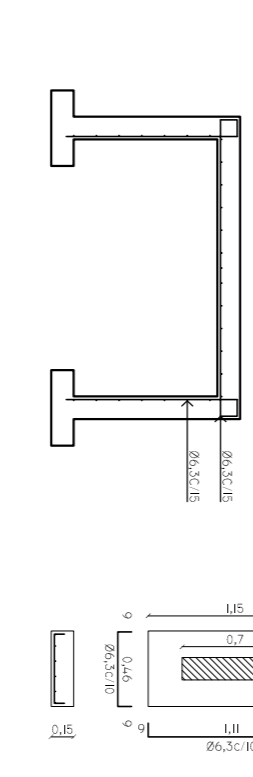
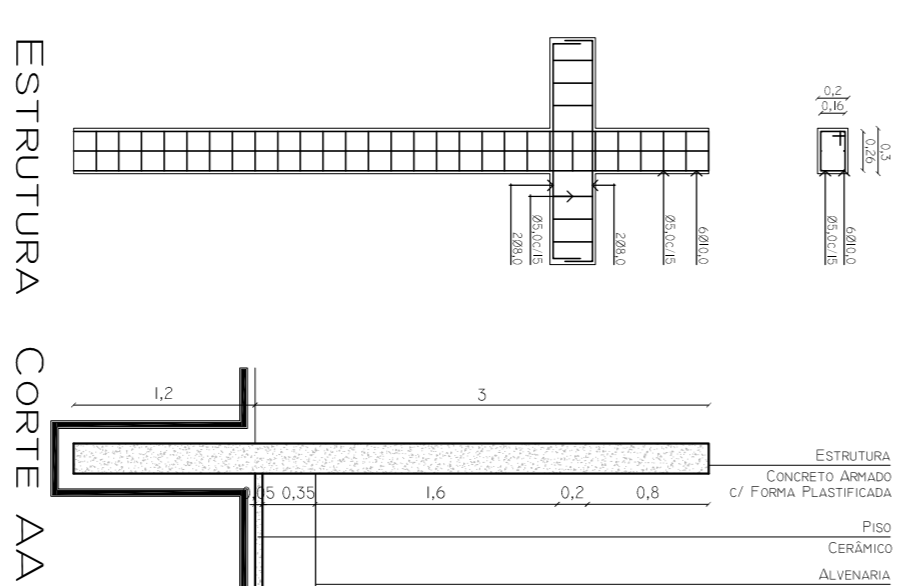
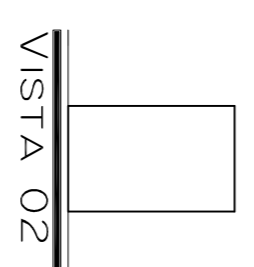
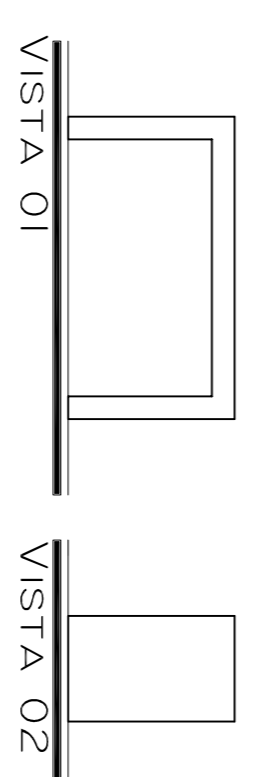
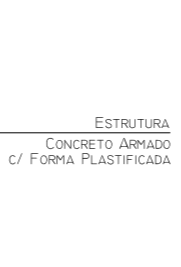
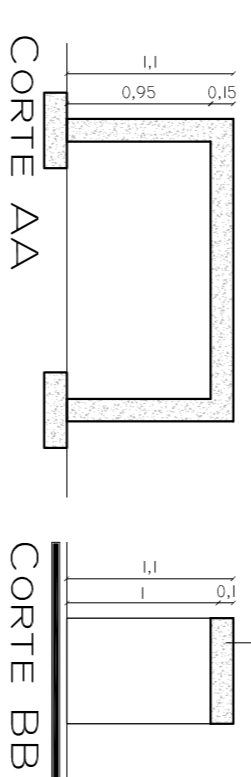
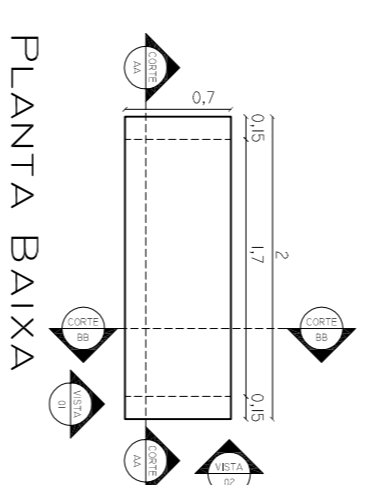
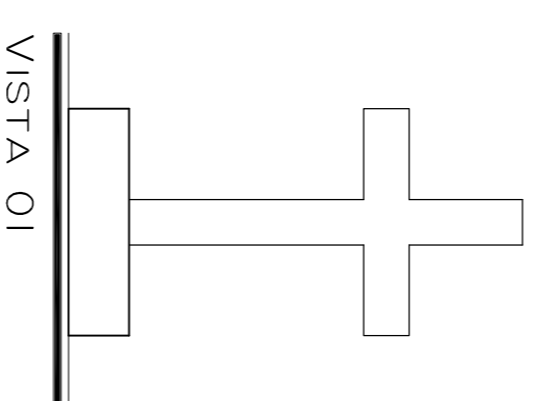
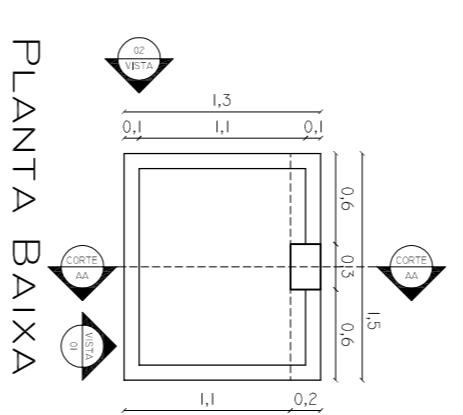


PROJETO ARQUITETÔNICO



DETALHE - CRUZ E VELÁRIO
ESCALA 1:50

DETALHE - MESA
ESCALA 1:50

OBRA:	AMPLIAÇÃO E MELHORIA CEMITÉRIO MUNICIPAL SC 480 - KM 77 - CENTRO - BOM JESUS - SC	DATA:	05/2015
RESP. TÉCNICO:	FABIANE BERNARDI ARQUITETA E URBANISTA/CAU-SC 450871-3	ESCALA:	INDICADA
MUNICÍPIO:	BOM JESUS - SC	ÁREA (m²):	3,027,20
ESPECIFICAÇÃO:	DETALHE - PORTAL DE ACESSO DETALHE - CRUZ E VELÁRIO DETALHE - MESA	DESENHO:	
		FRANCHA:	AR-05



ASSOCIAÇÃO DOS MUNICÍPIOS DO ALTO ITAIPAVA