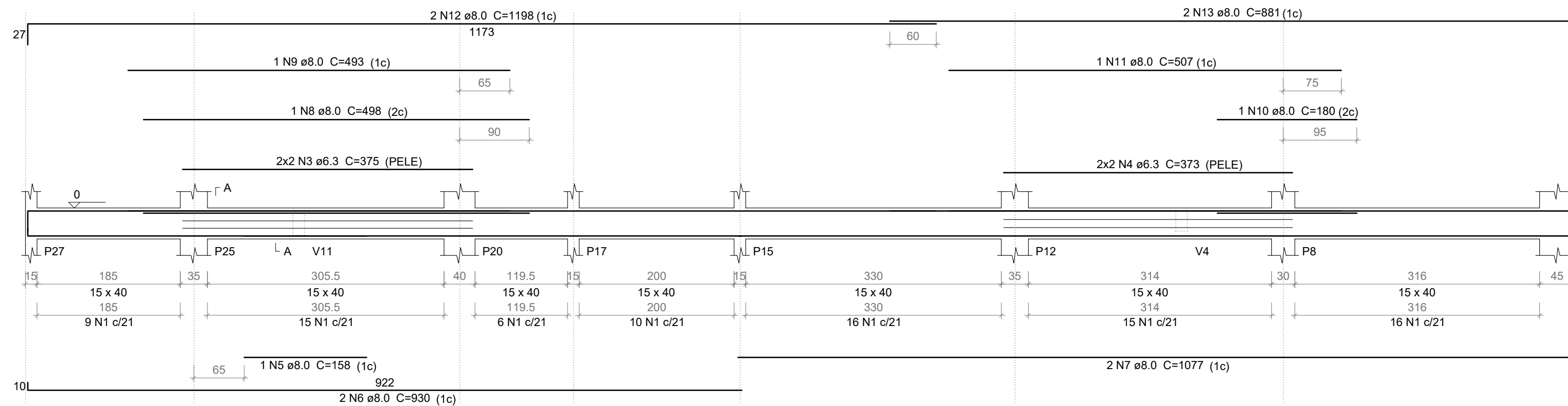
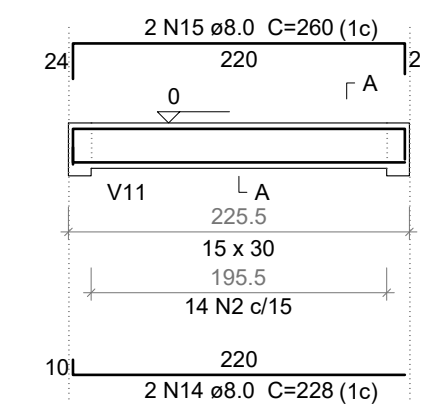


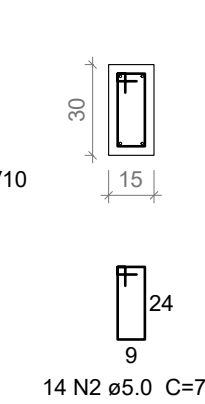
**V16**  
ESC 1:50



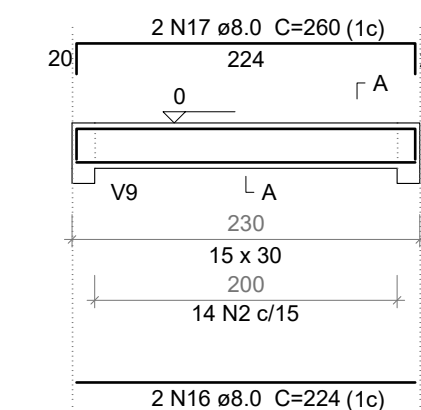
**V17**  
ESC 1:50



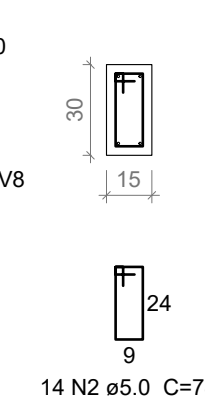
**SEÇÃO A-A**  
ESC 1:25



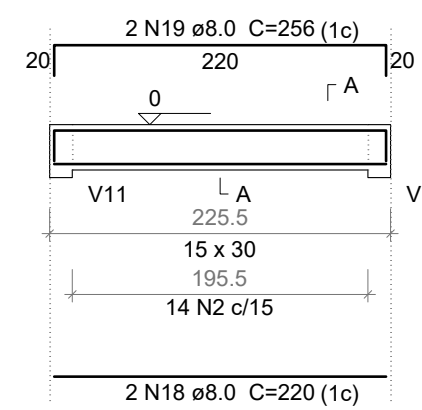
**V18**  
ESC 1:50



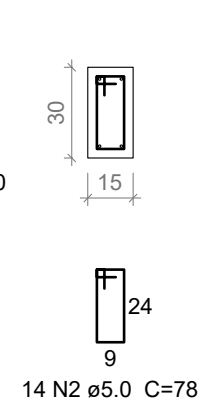
**SEÇÃO A-A**  
ESC 1:25



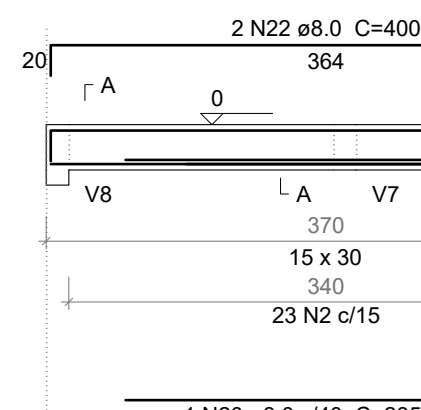
**V19**  
ESC 1:50



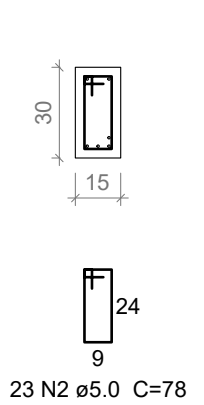
**SEÇÃO A-A**  
ESC 1:25



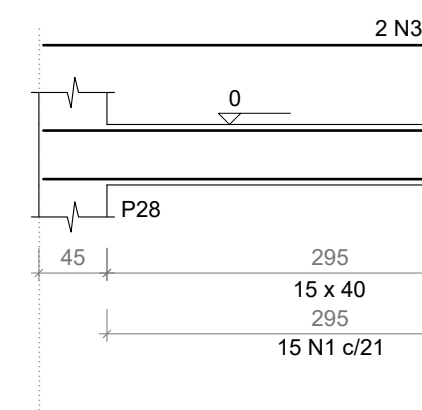
**V20**  
ESC 1:50



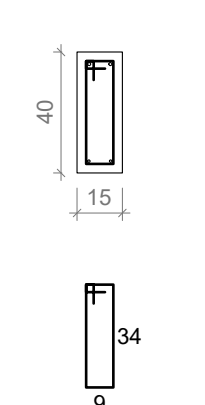
**SEÇÃO A-A**  
ESC 1:25



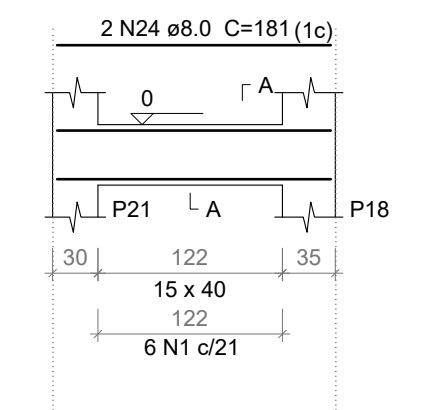
**V21**  
ESC 1:50



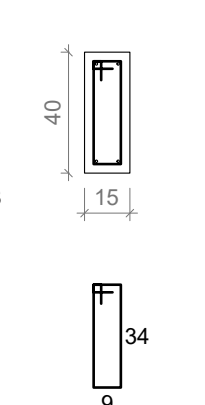
**SEÇÃO A-A**  
ESC 1:25



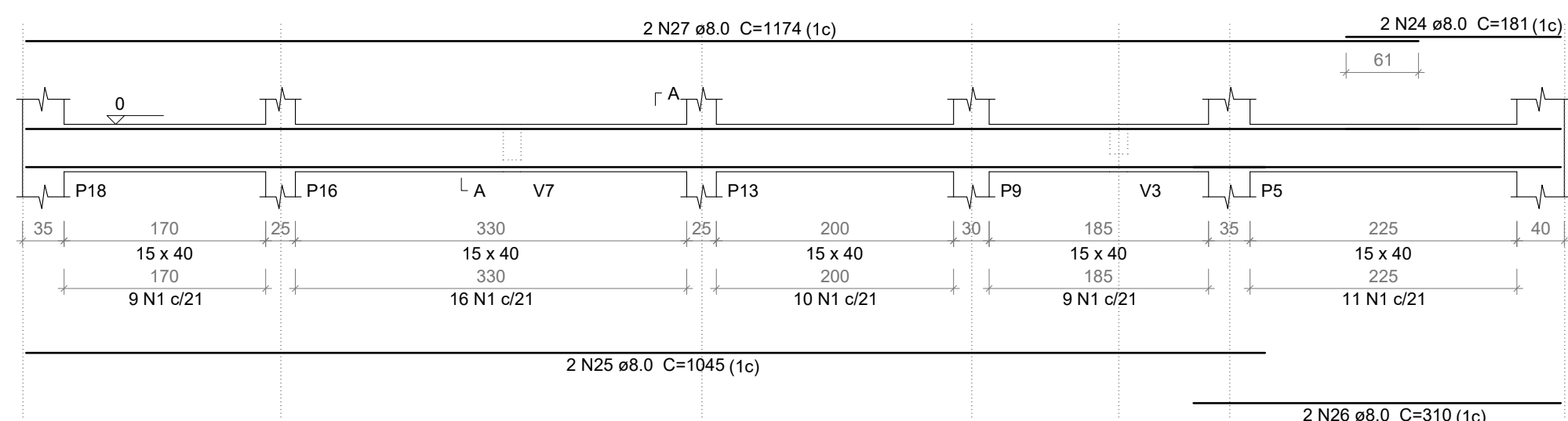
**V22**  
ESC 1:50



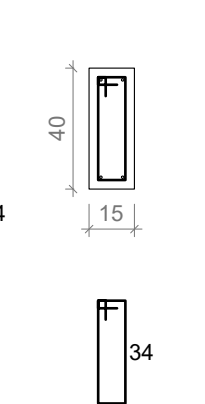
**SEÇÃO A-A**  
ESC 1:25



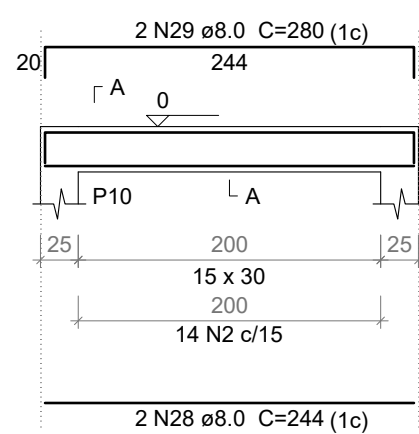
**V23**  
ESC 1:50



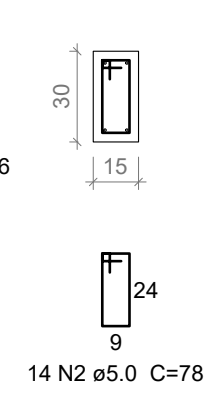
**SEÇÃO A-A**  
ESC 1:25



**V24**  
ESC 1:50



**SEÇÃO A-A**  
ESC 1:25



Relação do aço das vigas baldrame

VI	N	DIAM (mm)	QUANT	C.UNIT (cm)	C.TOTAL (cm)
V16	1	5.0	172	98	16856
V16	2	5.0	79	78	6162
V16	3	6.3	4	375	1500
V16	4	6.3	4	373	1492
V16	5	8.0	1	158	158
V16	6	8.0	2	930	1860
V16	7	8.0	2	1077	2154
V16	8	8.0	1	498	498
V16	9	8.0	1	493	493
V16	10	8.0	1	180	180
V16	11	8.0	1	507	507
V16	12	8.0	2	1198	2396
V16	13	8.0	2	881	1762
V16	14	8.0	2	228	456
V16	15	8.0	2	260	520
V16	16	8.0	2	224	448
V16	17	8.0	2	260	520
V16	18	8.0	2	220	440
V16	19	8.0	2	256	512
V16	20	8.0	1	235	235
V16	21	8.0	3	364	1092
V16	22	8.0	2	400	800
V16	23	8.0	2	572	1144
V16	24	8.0	6	181	1086
V16	25	8.0	2	1045	2090
V16	26	8.0	2	310	620
V16	27	8.0	2	1174	2348
V16	28	8.0	2	244	488
V16	29	8.0	2	280	560
V16	30	10.0	2	572	1144

Resumo do aço das vigas baldrame

AÇO	DIAM (mm)	C.TOTAL (m)	PESO + 10 % (kg)
CA50	6.3	30	8.1
CA50	8.0	233.7	101.4
CA50	10.0	11.5	7.8
CA60	5.0	230.2	39
PESO TOTAL (kg)			
CA50	117.2		
CA60	39		

Volume de concreto (C-25) = 3.02 m³  
Área de forma = 48.38 m²

**PROJETO ESTRUTURAL**



Obra:	<b>CENTRO DE CONVIVÊNCIA DE IDOSOS</b> Rua Olívio Rodigheri - s/n - Lote 25 Quadra B - Bom Jesus	Data:	09/2021
Escala:	Indicada	Área:	311,77 m²
Resp. Técnico:	Amanda Cunico Carneiro - Engenheira Civil - CREA/SC 163.289-6	Desenho:	Wagner
Município:	Bom Jesus - SC - 01.551.148/0001-87	Prancha:	ES-07/17
Especificação:	Detalhamento das armaduras das vigas baldrame		